

## Polished chrome sequential basin mixer tap



### Product details

Warranty:	2 years
Max rated load:	n/a
Doc M compliant:	Yes
Suitable for wet areas:	Yes
Flexi tap tail connection (to tap body):	M10 Thread
Flexi tap tail (onward connection):	¾ Inch Diameter Thread

### Features

- WRAS approved
- Easy operation for users with limited dexterity
- Cold start

## Finish options



Polished chrome

## Product description

Sequential basin mixer tap, polished chrome

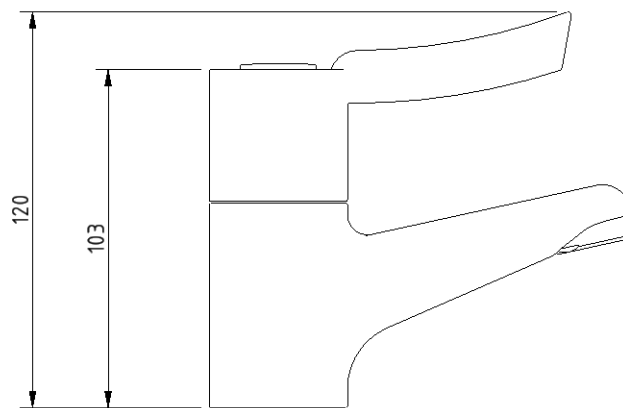
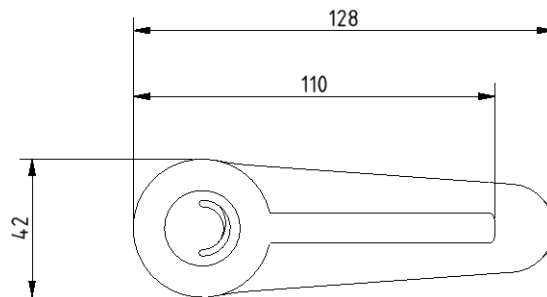
## Product code

BPLMON

## Disclaimer

NYMAS Group makes every effort to ensure that the information provided on this data sheet is correct. However, we cannot guarantee this, and accept no liability for any information or advice given on this data sheet.

## Dimensions (mm)



## Flow Rate Curve



Procedure:

Flow Determination

Pressure:

3,0 Bar

Cold:

18,9 l/min

Hot:

19 l/min

To 38 deg C:

26 l/min