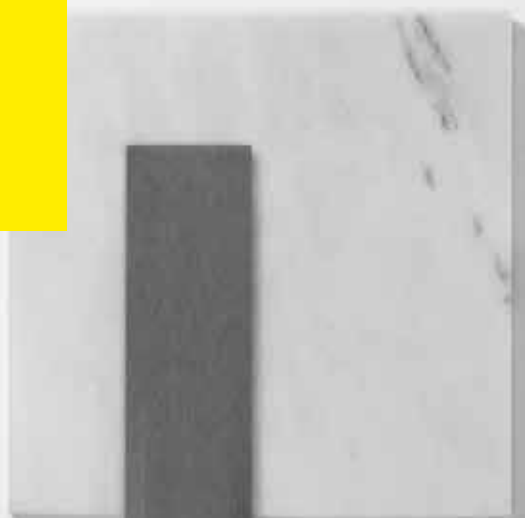
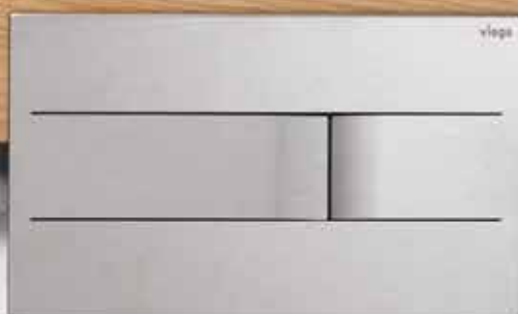


Viega Visign price list 2023

Technology, design and comfort
for your bathroom.



viega



NOTE

The challenges for the Sanitary & Heating Industry are great: housing construction and renovation as well as the consistent saving of resources in all areas will be the dominant themes in the coming years. With our product innovations, we make your daily work easier.

Extensive certifications are proof of our high quality standards: The quality management system (according to DIN EN ISO 9001) is certified just like the energy management system (according to DIN EN ISO 50001) and the environmental management system (according to DIN EN ISO 14001).

The illustrations and information contained in this document are not binding. We reserve the right to introduce

progressive improvements. Material data refer to those parts that come into contact with water. Dimensions are in mm or inches. PU = packaging unit. Prices refer to pound per piece. Exceptions are indicated in each case. Prices are not binding.

Viega products are distributed via specialist wholesalers. The term 'Viega' as used on the website may refer to a Viega group company or to the Viega brand, depending on the context. The individual companies of the Viega group are legally separate units and as such they operate independently. Therefore the term 'Viega' does not necessarily refer to any particular company. As of January 2023



CONTENT

4

Viega Prevista Dry

8

Viega Prevista Pure

10

Viega Visign flush plates



28

Viega Visign urinal flush plates

32

Viega Advantix Cleviva

40

Viega Advantix shower channels



46

Viega Advantix Vario

54

Viega Advantix bathroom and floor drains

60

Viega bath drains



72

Viega drains for shower trays

74

Viega drains for washbasins

Viega Prevista Dry

THE NEXT GENERATION OF PRE-WALL TECHNOLOGY FOR SUCCESSFUL BATHROOM PLANNING.

Easy installation, maximum design freedom: We poured all our experience and your ideas into the development of our new pre-wall system. The result is Viega Prevista: the new generation of pre-wall technology. It will save on working time, and offers you and your customers optimum levels of comfort.

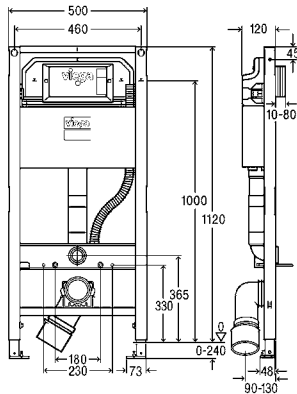


ALL THE BENEFITS AT A GLANCE

- One cistern, three applications
- Single mounting on the wall, installation in the customer's support profile or wet construction
- Element frame 40 x 40 mm, very stable
- Suitable for all private and public areas
- Meets common fire protection standards

Find out more:
[viega.co.uk/Prevista](https://www.viega.co.uk/Prevista)



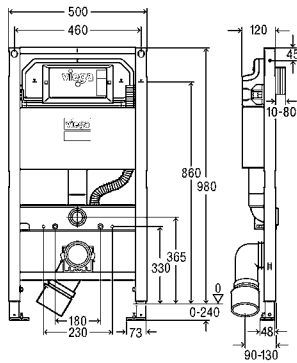


**Prevista Dry WC element with shower WC connection
1120 mm**

- equipped with Prevista Dry fixing set model 8570.36
- in addition optional available Prevista Dry support set model 8570.37
- steel, PE
- compatible with all WC flush plates for Prevista, integration in Prevista Dry Plus, dual flush technology, barrier-free
- WRAS / KIWA approved

Model 8522.38

| CH | B | PU | Article | £ |
|------|-----|------|----------------|---------------|
| 1120 | 500 | 1/15 | 804 190 | 405.68 |

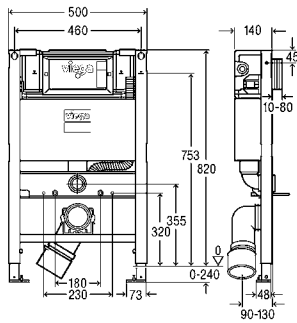


**Prevista Dry WC element with shower WC connection
980 mm**

- equipped with Prevista Dry fixing set model 8570.36
- in addition optional available Prevista Dry support set model 8570.37
- steel, PE
- compatible with all WC flush plates for Prevista, integration in Prevista Dry Plus, dual flush technology, barrier-free
- WRAS / KIWA approved

Model 8530.38

| CH | B | PU | Article | £ |
|-----|-----|------|----------------|---------------|
| 980 | 500 | 1/15 | 804 206 | 405.68 |

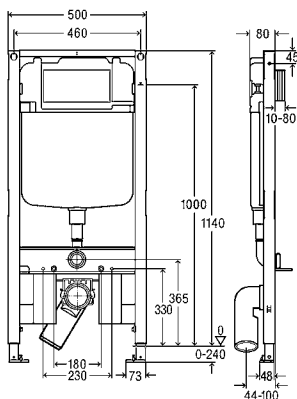


**Prevista Dry WC element with shower WC connection
820 mm**

- equipped with Prevista Dry fixing set model 8570.36
- in addition optional available Prevista Dry support set model 8570.37
- steel, PE
- compatible with all WC flush plates for Prevista, integration in Prevista Dry Plus, dual flush technology, flush actuation from front or top, barrier-free
- WRAS / KIWA approved

Model 8533.38

| CH | B | PU | Article | £ |
|-----|-----|------|----------------|---------------|
| 820 | 500 | 1/15 | 804 213 | 405.68 |

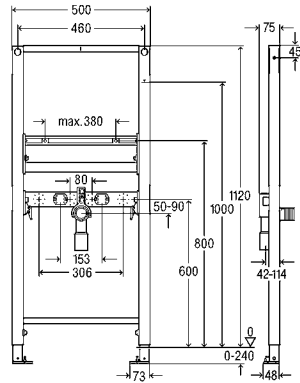


**Prevista Dry WC element
for wall-hung WC
8 cm**

- for pre-wall mounting please order separately: Prevista Dry fixing set model 8570.36
- steel, PE
- compatible with all WC flush plates for Prevista, integration in Prevista Dry Plus, dual flush technology, barrier-free

Model 8523

| CH | PU | Article | £ |
|------|------|----------------|---------------|
| 1130 | 1/12 | 798 529 | 510.39 |



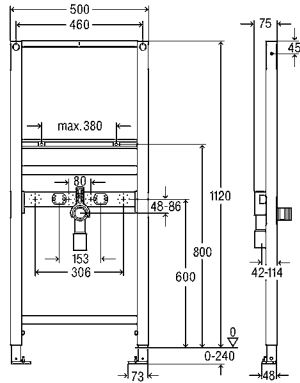
**Prevista Dry Washbasin element
1120 mm**

height-adjustable connections

- for WB with single-hole fitting
- for pre-wall mounting please order separately: Prevista Dry fixing set model 8570.36
- steel
- integration in Prevista Dry Plus

Model 8535

| CH | B | PU | Article | £ |
|------|-----|------|----------------|---------------|
| 1120 | 500 | 1/10 | 776 183 | 263.88 |



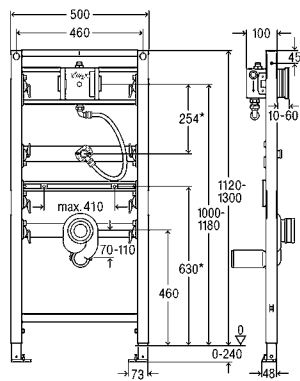
**Prevista Dry Washbasin element
fixed connections**

1120 mm

- for WB with single-hole fitting
- for pre-wall mounting please order separately: Prevista Dry fixing set model 8570.36
- steel
- integration in Prevista Dry Plus

Model 8538

| CH | B | PU | Article | £ |
|------|-----|------|----------------|---------------|
| 1120 | 500 | 1/10 | 789 329 | 234.95 |



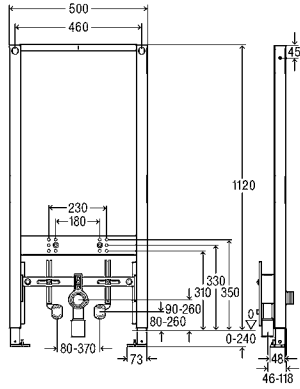
**Prevista Dry Urinal element
universal water connection**

1120-1300 mm

- for universal water connection
- for pre-wall mounting please order separately: Prevista Dry fixing set model 8570.36
- steel
- compatible with all urinal flush plates for Prevista, integration in Prevista Dry Plus

Model 8560.32

| CH | B | PU | Article | £ |
|-----------|-----|------|----------------|---------------|
| 1120-1300 | 500 | 1/12 | 776 411 | 586.58 |

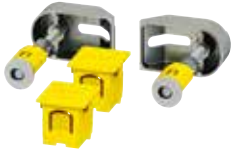


**Prevista Dry Bidet element
1120 mm**

- for wall-hung bidet
- for pre-wall mounting please order separately: Prevista Dry fixing set model 8570.36
- steel
- integration in Prevista Dry Plus

Model 8568

| CH | B | PU | Article | £ |
|------|-----|------|----------------|---------------|
| 1120 | 500 | 1/10 | 776 442 | 523.61 |



**Prevista Dry Fixing set
universal**

- for fixing of the Prevista Dry elements, single mounting direct on the structure, corner mounting on solid or steel stud frame
- depth-adjustable 120–200 mm, fixing possibilities for cladding

Model 8570.36

| QS | PU | Article | £ |
|----|----|----------------|--------------|
| 2 | 1 | 776 619 | 36.61 |

QS = Quantity per set



Prevista Dry fixing set

- for single mounting of Prevista Dry elements on a solid wall

Model 8573

| M | QS | PU | Article | £ |
|---|----|----|----------------|--------------|
| 8 | 2 | 1 | 776 626 | 25.16 |

QS = Quantity per set

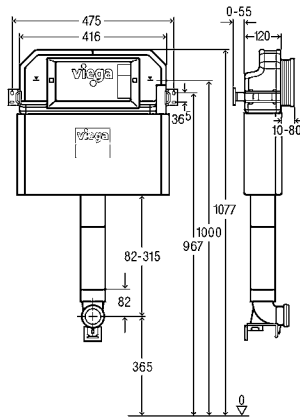
Viega Prevista Pure

FIRST CHOICE IN WET CONSTRUCTION: PREVISTA PURE.

State-of-the-art pre-wall technology combined with tried and proven methods: With Prevista Pure and the new cistern, custom, high-grade, durable wet construction installations can be created.



Find out more:
[viega.co.uk/Prevista](https://www.viega.co.uk/Prevista)

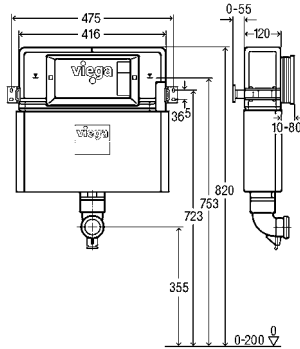


Concealed cistern 3H

- for floor-standing WC, immurement and encircling wall
- compatible with all WC flush plates for Prevista, flush actuation from front, dual flush technology
- WRAS / KIWA approved

Model 8502.38

| B | PU | Article | £ |
|-----|------|---------|--------|
| 416 | 1/20 | 804 657 | 238.02 |



Concealed cistern 3L

- for floor-standing WC, immurement and encircling wall
- compatible with all WC flush plates for Prevista, flush actuation from front or top, dual flush technology
- WRAS / KIWA approved

Model 8504.38

| B | PU | Article | £ |
|-----|------|---------|--------|
| 416 | 1/20 | 804 664 | 238.02 |



ALL THE BENEFITS AT A GLANCE

- WRAS / KIWA approved
- Robust, noise-insulated casing made of EPS
- Depth adjustment of pre-wall blocks is infinitely variable
- Can be combined with all Visign flush plates

Viega Visign flush plates

DESIGN THAT'S IN ITS ELEMENT ON EVERY VIEGA PRE-WALL.

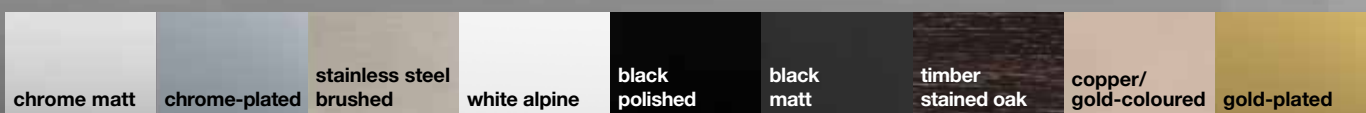
Featuring clean lines, flawless contours and beautifully tactile surfaces, the Visign for More and Visign for Style flush plate ranges are standout pieces of design. They are available in a host of materials and colours inspired by places across the globe, enabling the range to match all the latest trends in ceramic fittings and tiles. Visign flush plates are compatible with all Viega Prevista flush cisterns and pre-wall systems. Behind their stunning exterior, they conceal strikingly intelligent technical features.

For all
Prevista
concealed
cisterns



DIVERSE SURFACES FOR EVERY ROOM

Over 50 high-quality design variants that can be installed on every Viega Prevista pre-wall element.



AWARD-WINNING DESIGN

DESIGN PLUS
powered by: **ISH**



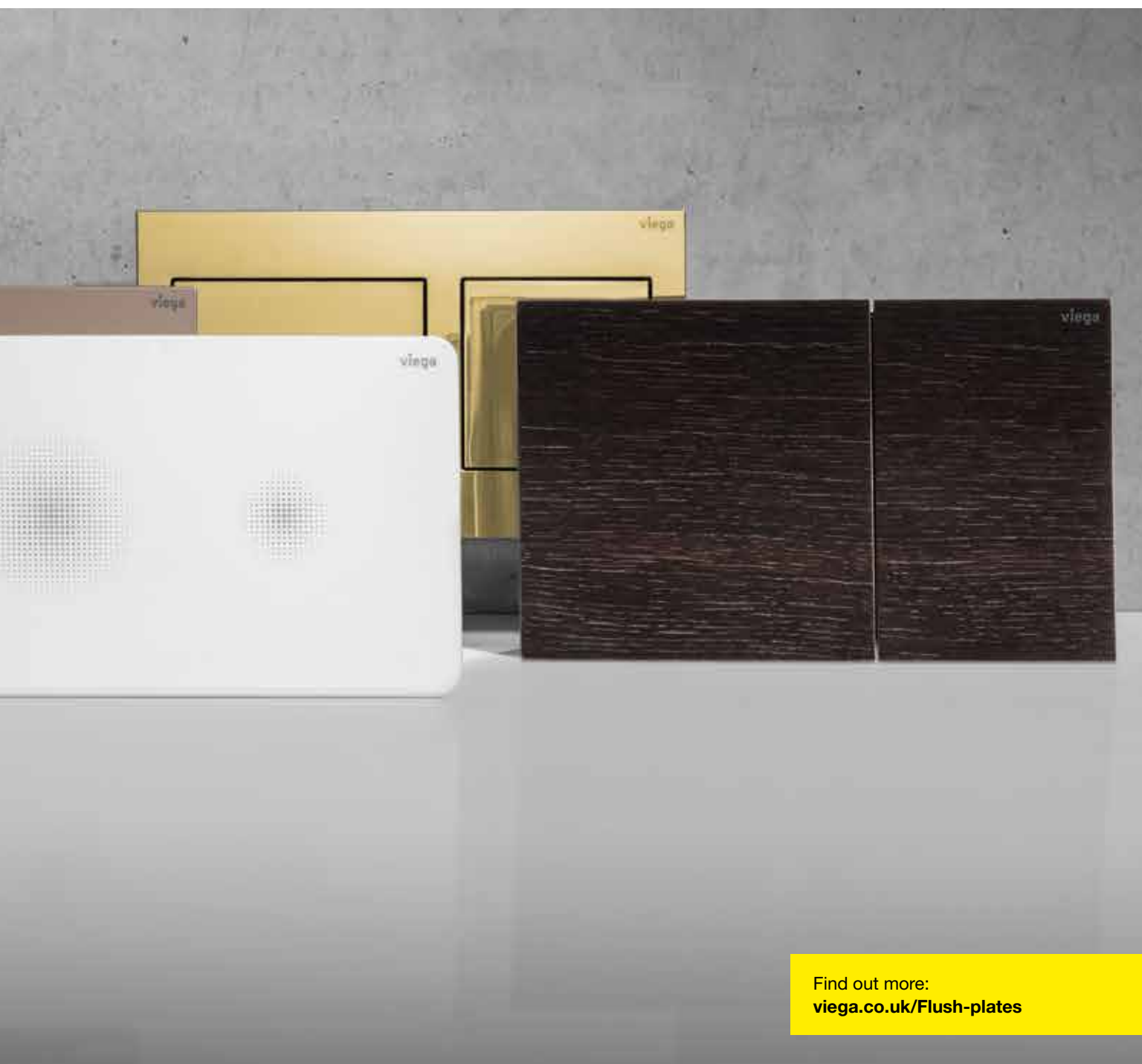
**INNOVATIONSPREIS
ARCHITEKTUR +
TECHNIK**



reddot winner 2020



reddot award 2019
winner



Find out more:
[viega.co.uk/Flush-plates](https://www.viega.co.uk/Flush-plates)

Visign for Style

ROUNDED OFF, CLEAR CUT.

The Visign for Style flush plates impress with their ease of use and quality while demonstrating that cool design is no longer an expensive luxury.



Our online flush plate configurator is an easy way to help you make the decision that is right for you:



viega.co.uk/Flush-plate-configurator

VISIGN FOR STYLE 20



Article 773 793



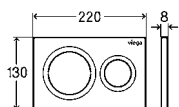
Article 773 786



Article 773 779



Article 796 389



**WC flush plate for Prevista
Visign for Style 20**

■ manual flush actuation from front or top, dual flush technology

Components

fixing frame, actuating rod set, fixing bolt

Model 8610.1

| Cover plate plastic | Pressure piece plastic | PU | Article | £ |
|---------------------|------------------------|----|---------|--------|
| white alpine | white alpine | 1 | 773 793 | 93.06 |
| chrome matt | chrome matt | 1 | 773 786 | 135.57 |
| chrome-plated | chrome-plated | 1 | 773 779 | 98.54 |
| black matt | black matt | 1 | 796 389 | 164.99 |

VISIGN FOR STYLE 21



Article 773 250



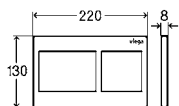
Article 773 243



Article 773 236



Article 801 724



**WC flush plate for Prevista
Visign for Style 21**

■ manual flush actuation from front or top, dual flush technology

Components

fixing frame, actuating rod set, fixing bolt

Model 8611.1

| Cover plate plastic | Pressure piece plastic | PU | Article | £ |
|---------------------|------------------------|----|---------|--------|
| white alpine | white alpine | 1 | 773 250 | 93.06 |
| chrome matt | chrome matt | 1 | 773 243 | 135.57 |
| chrome-plated | chrome-plated | 1 | 773 236 | 135.57 |
| black matt | black matt | 1 | 801 724 | 164.99 |

Visign for Style 23
SLIMLINE.



VISIGN FOR STYLE 23



Article 773 151



Article 773 069



Article 773 052



Article 801 731



Article 773 175



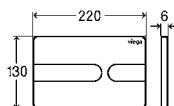
Article 773 199



Article 773 182



Article 773 229



**WC flush plate for Prevista
Visign for Style 23**

- manual flush actuation from front or top, dual flush technology

Components

fixing frame, actuating rod set, fixing bolt

Model 8613.1

| Cover plate | Pressure piece | PU | Article | £ |
|--|--|----|----------------------|--------|
| plastic white alpine | plastic white alpine | 1 | 773 151 | 119.88 |
| plastic chrome matt | plastic chrome matt | 1 | 773 069 | 147.24 |
| plastic chrome-plated | plastic chrome-plated | 1 | 773 052 | 170.05 |
| plastic black matt | plastic black matt | 1 | 801 731 | 205.96 |
| plastic black polished | plastic black polished | 1 | 773 175 | 147.30 |
| plastic stainless steel coloured brushed | plastic stainless steel coloured brushed | 1 | 773 168 | 262.95 |
| acrylic black polished | plastic black matt | 1 | 773 199 | 434.28 |
| acrylic black polished | plastic stainless steel coloured brushed | 1 | 773 182 | 434.28 |
| plastic special colour | plastic special colour | 1 | 773 205 ¹ | ON REQ |
| plastic metallic colour | plastic metallic colour | 1 | 773 212 ¹ | ON REQ |
| plastic gold-plated | plastic gold-plated | 1 | 773 229 ² | ON REQ |

¹) Delivery time for customised range: 8 weeks plus shipping; non-returnable!

²) Delivery time for customised range: 10 weeks plus shipping; non-returnable!

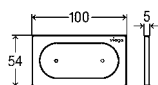
VISIGN FOR STYLE 23 – REMOTE FLUSH ACTUATION



Article 773 083



Article 773 076



WC remote flush actuation for Prevista

Visign for Style 23

electronic

- for all Prevista concealed cisterns
- in combination with installation set model 8640.14
- only in connection with accessory set model 8655.11
- manual flush actuation, dual flush technology, with Viega Hygiene function

Components

fixing frame

Technical data

Small flush volume factory setting approx. 3 l

Large flush volume factory setting approx. 6 l

Note

Electronic accessory set has to be ordered separately (Article 783 952).

Suitable for installation in furniture.

Note regarding Viega Hygiene function: to support the intended operation after a user detection, different hygiene time intervals and hygiene flush volumes can be set. Programmable time intervals: 1 h, 12 h, 24 h, 72 h, 168 h. Programmable flush volumes: 3 l, 7.5 l.

Model 8640.1

| Cover plate | Pressure piece | PU | Article | £ |
|-----------------------|-----------------------|----|---------|--------|
| plastic white alpine | plastic white alpine | 1 | 773 083 | 221.88 |
| plastic chrome-plated | plastic chrome-plated | 1 | 773 076 | 311.77 |

VISIGN FOR STYLE 24



Article 773 281



Article 773 274



Article 773 267



Article 801 748



Article 773 304



Article 773 298



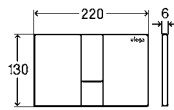
Article 773 311



Article 773 328



Article 773 359



**WC flush plate for Prevista
Visign for Style 24**

■ for all Prevista concealed cisterns

■ manual flush actuation from front or top, dual flush technology

Components

fixing frame, actuating rod set, fixing bolt

Model 8614.1

| Cover plate | Pressure piece | PU | Article | £ |
|--|--|----|----------------------------|---------------|
| plastic white alpine | plastic white alpine | 1 | 773 281 | 119.98 |
| plastic chrome matt | plastic chrome matt | 1 | 773 274 | 147.39 |
| plastic chrome-plated | plastic chrome-plated | 1 | 773 267 | 170.21 |
| plastic black matt | plastic black matt | 1 | 801 748 | 205.96 |
| plastic black polished | plastic black polished | 1 | 773 304 | 147.45 |
| plastic stainless steel coloured brushed | plastic stainless steel coloured brushed | 1 | 773 298 | 263.20 |
| acrylic black polished | plastic black matt | 1 | 773 311 | 434.28 |
| acrylic black polished | plastic stainless steel coloured brushed | 1 | 773 328 | 434.28 |
| plastic special colour | plastic special colour | 1 | 773 335¹ | ON REQ |
| plastic metallic colour | plastic metallic colour | 1 | 773 342¹ | ON REQ |
| plastic gold-plated | plastic gold-plated | 1 | 773 359² | ON REQ |

1) Delivery time for customised range: 8 weeks plus shipping; non-returnable!

2) Delivery time for customised range: 10 weeks plus shipping; non-returnable!

Visign for Style 24

THE MIDDLE WAY.



Visign for More

HIGH-GRADE MATERIALS FOR EVERY TASTE.

From veneered wood finishes, through brushed stainless steel, to glass and high-grade plastic: the new Visign flush plates come in a wide variety of different materials. They offer the ideal design for every taste, as well as featuring state-of-the-art technology. All plates are compatible with the Prevista cistern, and can mostly be installed without the use of tools.



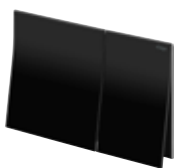
VISIGN FOR MORE 200



Article 773 601



Article 773 595



Article 773 588



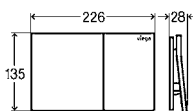
Article 773 571



Article 773 564



Article 773 632



**WC flush plate for Prevista
Visign for More 200**

- for all Prevista concealed cisterns
- manual flush actuation from front, dual flush technology

Components

fixing frame, actuating rod set, fixing bolt

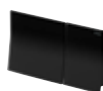
Model 8620.1

| Cover plate | Pressure piece | PU | Article | £ |
|------------------------|---------------------------------|----|----------------------|--------|
| plastic black polished | metal copper/gold-coloured matt | 1 | 773 601 | 635.55 |
| plastic black polished | metal black matt | 1 | 773 595 | 635.55 |
| plastic chrome-plated | glass black | 1 | 773 588 | 526.76 |
| plastic chrome-plated | glass white | 1 | 773 571 | 526.76 |
| plastic black polished | timber stained oak | 1 | 773 564 | 635.55 |
| plastic black polished | metal special colour | 1 | 773 618 ¹ | ON REQ |
| plastic black polished | metal metallic colour | 1 | 773 625 ¹ | ON REQ |
| plastic black polished | metal gold-plated | 1 | 773 632 ² | ON REQ |

¹⁾ Delivery time for customised range: 8 weeks plus shipping; non-returnable!

²⁾ Delivery time for customised range: 10 weeks plus shipping; non-returnable!

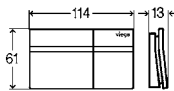
VISIGN FOR MORE 200 – REMOTE FLUSH ACTUATION



Article 773 106



Article 773 090



**WC remote flush actuation for Prevista
Visign for More 200
electronic**

- for all Prevista concealed cisterns
- in combination with installation set model 8640.14
- only in connection with accessory set model 8655.11
- manual flush actuation, dual flush technology, with Viegia Hygiene function

Components

fixing frame

Technical data

partial flush volume factory setting approx. 3 l

full flush volume factory setting approx. 6 l

Note

Electronic accessory set has to be ordered separately (Article 783 952).

Suitable for installation in furniture.

Note regarding Viegia Hygiene function: to support the intended operation after a user detection, different hygiene time intervals and hygiene flush volumes can be set. Programmable time intervals: 1 h, 12 h, 24 h, 72 h, 168 h. Programmable flush volumes: 3 l, 7.5 l.

Model 8641.1

| Pressure piece glass | PU | Article | £ |
|----------------------|----|---------|--------|
| black | 1 | 773 106 | 385.52 |
| white | 1 | 773 090 | 385.52 |



VISIGN FOR MORE 201



Article 773 526



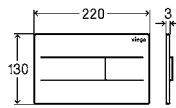
Article 773 519



Article 773 502



Article 773 557



**WC flush plate for Prevista
Visign for More 201
electronic**

- for all Prevista concealed cisterns
- in addition optional available WC installation frame for Prevista model 8650.1
- only in connection with accessory set model 8655.11
- manual flush actuation from front or top, dual flush technology, with Viega Hygiene function

Components

fixing frame, actuating rod set, fixing bolt

Technical data

partial flush volume factory setting approx. 3 l

full flush volume factory setting approx. 6 l

Note

Electronic accessory set has to be ordered separately (Article 783 952).

Model 8621.1

| Cover plate stainless steel | Pressure piece stainless steel | PU | Article | £ |
|--------------------------------|-----------------------------------|----|----------------------------|---------------|
| brushed | brushed | 1 | 773 526 | 445.82 |
| black matt | black matt | 1 | 773 519 | 445.82 |
| white polished | white polished | 1 | 773 502 | 445.82 |
| special colour | special colour | 1 | 773 533¹ | ON REQ |
| metallic colour | metallic colour | 1 | 773 540¹ | ON REQ |
| gold-plated | gold-plated | 1 | 773 557² | ON REQ |

¹) Delivery time for customised range: 8 weeks plus shipping; non-returnable!

²) Delivery time for customised range: 10 weeks plus shipping; non-returnable!

VISIGN FOR MORE 202



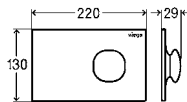
Article 773 458



Article 773 465



Article 773 496



WC flush plate for Prevista

Visign for More 202

electronic

with LED lightning

- for all Prevista concealed cisterns
- only in connection with accessory set model 8655.11
- manual flush actuation from front or top, dual flush technology, with Viega Hygiene function, with permanent LED lighting

Components

fixing frame, actuating rod set, fixing bolt

Technical data

partial flush volume factory setting approx. 3 l

full flush volume factory setting approx. 6 l

Note

Electronic accessory set has to be ordered separately (Article 783 952).

Model 8622.1

| Cover plate metal | Pressure piece metal | PU | Article | £ |
|-------------------|----------------------|----|----------------------|--------|
| white polished | white polished | 1 | 773 458 | 856.39 |
| white polished | chrome-plated | 1 | 773 465 | 856.39 |
| special colour | special colour | 1 | 773 472 ¹ | ON REQ |
| metallic colour | metallic colour | 1 | 773 489 ¹ | ON REQ |
| gold-plated | gold-plated | 1 | 773 496 ² | ON REQ |

¹) Delivery time for customised range: 8 weeks plus shipping; non-returnable!

²) Delivery time for customised range: 10 weeks plus shipping; non-returnable!





VISIGN FOR MORE 204



Article 773 663



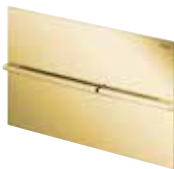
Article 773 656



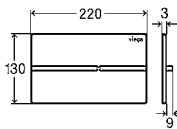
Article 773 649



Article 773 670



Article 773 700



**WC flush plate for Prevista
Visign for More 204
electronic**

- for all Prevista concealed cisterns
- in addition optional available WC installation frame for Prevista model 8650.1
- only in connection with accessory set model 8655.11
- manual flush actuation from front or top, dual flush technology, with Viega Hygiene function

Components

fixing frame, actuating rod set, fixing bolt

Technical data

partial flush volume factory setting approx. 3 l

full flush volume factory setting approx. 6 l

Note

Electronic accessory set has to be ordered separately (Article 783 952).

Model 8624.1

| Cover plate stainless steel | Pressure piece metal | PU | Article | £ |
|-----------------------------|----------------------|----|----------------------------|---------------|
| brushed | brushed | 1 | 773 663 | 473.03 |
| black matt | black matt | 1 | 773 656 | 473.03 |
| polished | chrome-plated | 1 | 773 649 | 473.03 |
| black matt | brushed | 1 | 773 670 | 473.03 |
| special colour | special colour | 1 | 773 687¹ | ON REQ |
| metallic colour | metallic colour | 1 | 773 694¹ | ON REQ |
| gold-plated | gold-plated | 1 | 773 700² | ON REQ |

¹⁾ Delivery time for customised range: 8 weeks plus shipping; non-returnable!

²⁾ Delivery time for customised range: 10 weeks plus shipping; non-returnable!



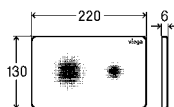
Visign for Style and Visign for More sensitive MAXIMUM HYGIENE IN THE BATHROOM.

Assuring exemplary cleanliness, easy to maintain, and attractive in design: The Viega Visign for More 205 sensitive and Visign for Style 25 sensitive touchless flush plates provide supreme flushing comfort and convenience in any bathroom. Both flush plates activate flushing when a hand is held close in front of the desired flush function on the plate. That means user enjoy maximum flushing comfort and convenience, while also avoiding germs and bacteria. The flush plates are as clean and durable as they are attractively designed: All surfaces are very easy to clean, and will retain their positive attributes for decades to come.

VISIGN FOR STYLE 25 SENSITIVE



Article 774 356



WC flush plate for Prevista Visign for Style 25 sensitive

- for all Prevista concealed cisterns
- only in connection with accessory set model 8655.11
- printed with noctilucent finish
- touchless flush actuation from front or top, dual flush technology, with Viega Hygiene function

Components

fixing frame, actuating rod set, fixing bolt

Technical data

partial flush volume factory setting approx. 3 l

full flush volume factory setting approx. 6 l

Note

Electronic accessory set has to be ordered separately (Article 783 952).

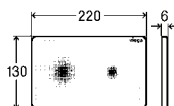
Model 8615.1

| Cover plate | PU | Article | £ |
|----------------------|----|---------|--------|
| plastic white alpine | 1 | 774 356 | 177.63 |

VISIGN FOR MORE 205 SENSITIVE



Article 774 363



WC flush plate for Prevista Visign for More 205 sensitive with LED lightning

- for all Prevista concealed cisterns
- only in connection with accessory set model 8655.11
- chrome-plated frame
- touchless flush actuation from front or top, dual flush technology, with Viega Hygiene function

Components

fixing frame, actuating rod set, fixing bolt

Technical data

partial flush volume factory setting approx. 3 l

full flush volume factory setting approx. 6 l

Note

Electronic accessory set has to be ordered separately (Article 783 952).

Orientation light illuminates when coming closer.

Model 8625.1

| Cover plate | PU | Article | £ |
|-------------|----|---------|--------|
| glass black | 1 | 774 363 | 856.39 |



Visign for Life THE CLASSIC.

The Visign for Life flush plates impress with a clearly defined design and robust actuation mechanism. They are made of plastic, and are suitable for flush actuation from the front or from above. Featuring the dual-volume flush system for either low or high flush volume, the flush plates are exemplary in terms of their water consumption.

VISIGN FOR LIFE 5



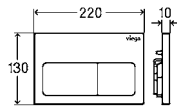
Article 773 731



Article 773 724



Article 773 717



WC flush plate for Prevista Visign for Life 5

- for all Prevista concealed cisterns
- for revision shaft depth > 60 mm please order separately: extension set model 8570.60
- manual flush actuation from front or top, dual flush technology

Components
actuating rod set, fixing material
Model 8601.1

| Cover plate plastic | Pressure piece plastic | PU | Article | £ |
|---------------------|------------------------|----|---------|-------|
| white alpine | white alpine | 1 | 773 731 | 63.82 |
| chrome matt | chrome matt | 1 | 773 724 | 94.23 |
| chrome-plated | chrome-plated | 1 | 773 717 | 63.82 |

VISIGN FOR LIFE 6



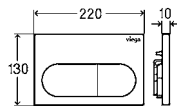
Article 773 762



Article 773 755



Article 773 748



WC flush plate for Prevista Visign for Life 6

- for all Prevista concealed cisterns
- for revision shaft depth > 60 mm please order separately: extension set model 8570.60
- manual flush actuation from front or top, dual flush technology

Components
actuating rod set, fixing material
Model 8602.1

| Cover plate plastic | Pressure piece plastic | PU | Article | £ |
|---------------------|------------------------|----|---------|-------|
| white alpine | white alpine | 1 | 773 762 | 63.82 |
| chrome matt | chrome matt | 1 | 773 755 | 94.23 |
| chrome-plated | chrome-plated | 1 | 773 748 | 63.82 |

Visign for Public

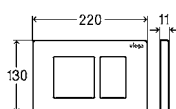
FUNCTIONAL AND DURABLE.

The Visign for Public flush plates are particularly well suited to use in public amenities. Their smooth surfaces make them easy to clean. Its durable material provides protection from vandalism. Flush actuation is manual or infrared. With the infrared system, a sensor behind the cover plate detects touchless use and automatically actuates a flush. The flush volume and sensing range can be adjusted individually.

VISIGN FOR PUBLIC 10



Article 774 349



WC flush plate for Prevista

Visign for Public 10

- for all Prevista concealed cisterns
- manual flush actuation from front or top, dual flush technology, screwable

Components

fixing frame, actuating rod set, fixing bolt

Model 8630.1

| Cover plate stainless steel | Pressure piece stainless steel | PU | Article | £ |
|-----------------------------|--------------------------------|----|---------|--------|
| brushed | brushed | 1 | 774 349 | 172.44 |

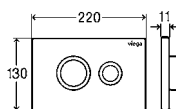
VISIGN FOR PUBLIC 11



Article 774 325



Article 774 332



WC flush plate for Prevista

Visign for Public 11

- for all Prevista concealed cisterns
- manual flush actuation from front or top, dual flush technology, screwable

Equipment

fixing frame, actuating rod set, fixing bolt

Model 8631.1

| Cover plate stainless steel | Pressure piece stainless steel | PU | Article | £ |
|-----------------------------|--------------------------------|----|---------|--------|
| brushed | polished | 1 | 774 325 | 235.78 |
| white polished | polished | 1 | 774 332 | 282.93 |

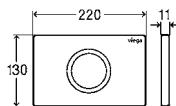
VISIGN FOR PUBLIC 12



Article 774 370



Article 774 387



WC flush plate for Prevista

Visign for Public 12

infrared flush actuation

- for all Prevista concealed cisterns
- only in connection with accessory set model 8655.11
- touchless infrared flush actuation from front, dual flush technology, with Viegas Hygiene function, screwable

Components

fixing frame, actuating rod set, fixing bolt

Technical data

partial flush volume factory setting approx. 3 l

full flush volume factory setting approx. 6 l

Note

Electronic accessory set has to be ordered separately (Article 783 952).

Model 8635.1

| Cover plate stainless steel | PU | Article | £ |
|-----------------------------|----|---------|----------|
| brushed | 1 | 774 370 | 899.62 |
| white polished | 1 | 774 387 | 1,010.08 |

Viega Visign flush plates ACCESSORIES.



WC ACTUATION ACCESSORIES



**Accessory set
electronic**

- equipped with drive unit model 8580.29
- use with WC flush plate for Prevista

Components

- mains adapter (cable length 1.05 m)

Technical data

- power supply voltage 100–240 V AC/50–60 Hz

Model 8655.11

| | PU | Article | £ |
|--|----|---------|--------|
| | 1 | 783 952 | 255.31 |



WC installation frame for Prevista with LED lighting

- for all Prevista concealed cisterns
- only in connection with WC flush plate for Prevista Visign for More 201 model 8621.1, WC flush plate for Prevista Visign for More 204 model 8624.1
- plastic

Components

fixing frame, fixing bolt, connection piece

Note

Orientation light illuminates when coming closer.

Electronic accessory set has to be ordered separately (Article 783 952).

Model 8650.1

| | PU | Article | £ |
|--|----|---------|--------|
| | 1 | 775 803 | 696.54 |



WC installation frame for Prevista tile-level

- for Prevista concealed cistern, tile-level installation of the WC flush plate, dry construction
- suitable for WC flush plate for Prevista Visign for Style 20 model 8610.1, WC flush plate for Prevista Visign for Style 21 model 8611.1, WC flush plate for Prevista Visign for More 201 model 8621.1, WC flush plate for Prevista Visign for More 202 model 8622.1, WC flush plate for Prevista Visign for More 204 model 8624.1, WC flush plate for Prevista Visign for Style 24 article 773 267, 773 274, 773 281, 773 298, 773 304, 773 335, 773 342, 773 359, 801 748
- plastic

Note

The tile-level installation frame can only be used in the Viega pre-wall systems Prevista Dry and Prevista Dry Plus!

Model 8651.1

| Version | PU | Article | £ |
|---------------|----|---------|--------|
| chrome-plated | 1 | 775 810 | 185.86 |



WC tablet holder for Prevista

- for WC cleaning tablets

Model 8653.1

| | PU | Article | £ |
|--|----|---------|-------|
| | 1 | 773 366 | 68.62 |



Battery compartment

- suitable for WC flush plate for Prevista Visign for More 201 model 8621.1, WC flush plate for Prevista Visign for More 204 model 8624.1, WC remote flush actuation for Prevista Visign for Style 23 model 8640.1, WC remote flush actuation for Prevista Visign for More 200 model 8641.1

Model 8570.56

| | PU | Article | £ |
|--|----|---------|--------|
| | 1 | 786 014 | 149.40 |

Viega Visign urinal flush plates

THE PERFECT DESIGN ENHANCEMENT FOR YOUR RESTROOM.

Coordinated design is an important factor when it comes to configuring a restroom. That is why we supply Viega urinal flush plates that go perfectly with your WC flush. Which means that there are no limits to your design ideas. And that includes the colours: We can also provide individual paint or metal finishes for your flush plates on request.



VISIGN FOR STYLE 20



Article 774 493



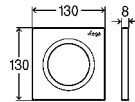
Article 774 486



Article 774 479



Article 817 947



**Urinal flush plate for Prevista
Visign for Style 20**

- for urinal flushing system
- plastic
- manual flush actuation from front

Components

fixing frame, actuating rod set, fixing bolt, cartridge valve

Model 8610.2

| Cover plate plastic | Pressure piece plastic | PU | Article | £ |
|---------------------|------------------------|----|---------|--------|
| white alpine | white alpine | 1 | 774 493 | 298.34 |
| chrome matt | chrome matt | 1 | 774 486 | 316.22 |
| chrome-plated | chrome-plated | 1 | 774 479 | 307.26 |
| black matt | black matt | 1 | 817 947 | 412.86 |

VISIGN FOR STYLE 21



Article 774 523



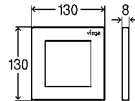
Article 774 516



Article 774 509



Article 774 509



**Urinal flush plate for Prevista
Visign for Style 21**

- for urinal flushing system
- plastic
- manual flush actuation from front

Components

fixing frame, actuating rod set, fixing bolt, cartridge valve

Model 8611.2

| Cover plate plastic | Pressure piece plastic | PU | Article | £ |
|---------------------|------------------------|----|---------|--------|
| white alpine | white alpine | 1 | 774 523 | 298.34 |
| chrome matt | chrome matt | 1 | 774 516 | 316.22 |
| chrome-plated | chrome-plated | 1 | 774 509 | 307.26 |
| black matt | black matt | 1 | 818 050 | 412.86 |

VISIGN FOR STYLE 23



Article 774 554



Article 774 547



Article 774 530



Article 774 578



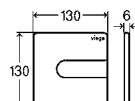
Article 774 561



Article 774 592



Article 774 585



**Urinal flush plate for Prevista
Visign for Style 23**

- for urinal flushing system
- plastic
- manual flush actuation from front

Components

fixing frame, actuating rod set, fixing bolt, cartridge valve

Model 8613.2

| Cover plate | Pressure piece | PU | Article | £ |
|--|--|----|---------|--------|
| plastic white alpine | plastic white alpine | 1 | 774 554 | 321.33 |
| plastic chrome matt | plastic chrome matt | 1 | 774 547 | 340.59 |
| plastic chrome-plated | plastic chrome-plated | 1 | 774 530 | 330.96 |
| plastic black polished | plastic black polished | 1 | 774 578 | 349.27 |
| plastic stainless steel coloured brushed | plastic stainless steel coloured brushed | 1 | 774 561 | 509.65 |
| acrylic black polished | plastic black matt | 1 | 774 592 | 762.38 |
| acrylic black polished | plastic stainless steel coloured brushed | 1 | 774 585 | 805.14 |



DESIGN PLUS
powered by: **ISH**

VISIGN FOR MORE 200



Article 814 090



Article 774 639



Article 774 622



Article 774 646



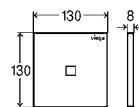
Article 774 677



Article 774 660



Article 774 653



**Urinal flush plate for Prevista
Visign for More 200
infrared flush actuation**

- for urinal flushing system
- plastic, glass, wood
- touchless infrared flush actuation from front

Components

fixing frame, actuating rod set, fixing bolt, electronic cartridge valve, mains adapter

Technical data

power supply voltage 100–240 V AC/50–60 Hz

Note

With Viega Hygiene function optionally after 1 h, 12 h, 24 h, 72 h or 168 h without use. With joint between wall and flush plate for visual separation of the components (shadow gap).

Model 8620.2

| Cover plate | PU | Article | £ |
|--|----|---------|----------|
| plastic black matt | 1 | 814 090 | 889.66 |
| plastic white alpine | 1 | 774 639 | 791.85 |
| plastic chrome-plated | 1 | 774 622 | 815.62 |
| plastic stainless steel coloured brushed | 1 | 774 646 | 840.08 |
| glass black | 1 | 774 677 | 1,152.73 |
| glass white | 1 | 774 660 | 1,152.73 |
| timber stained oak | 1 | 774 653 | 1,210.35 |



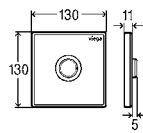
VISIGN FOR PUBLIC 11



Article 774 608



Article 774 615



Urinal flush plate for Prevista Visign for Public 11

- for urinal flushing system
- stainless steel
- manual flush actuation from front

Components

fixing frame, actuating rod set, fixing bolt, cartridge valve
Model 8631.2

| Cover plate stainless steel | Pressure piece stainless steel | PU | Article | £ |
|-----------------------------|--------------------------------|----|---------|--------|
| brushed | polished | 1 | 774 608 | 395.14 |
| white polished | polished | 1 | 774 615 | 414.88 |

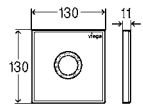
VISIGN FOR PUBLIC 12



Article 774 684



Article 774 691



Urinal flush plate for Prevista Visign for Public 12 infrared flush actuation

- for urinal flushing system
- stainless steel
- touchless infrared flush actuation from front

Components

fixing frame, actuating rod set, fixing bolt, electronic cartridge valve, mains adapter

Technical data

power supply voltage 230 V/50 Hz

Note

With Viega Hygiene function optionally after 1 h, 12 h, 24 h, 72 h or 168 h without use.

Model 8635.2

| Cover plate stainless steel | PU | Article | £ |
|-----------------------------|----|---------|----------|
| brushed | 1 | 774 684 | 1,152.73 |
| white polished | 1 | 774 691 | 1,210.35 |



Urinal installation frame for Prevista tile-level

- for tile-level installation of the urinal flush plate
- suitable for urinal flush plate for Prevista Visign for Style 20 model 8610.2, urinal flush plate for Prevista Visign for Style 21 model 8611.2, urinal flush plate for Prevista Visign for More 200 model 8620.2
- plastic

Model 8651.2

| Version | PU | Article | £ |
|---------------|----|---------|--------|
| chrome-plated | 1 | 775 827 | 395.54 |

Viega Advantix Cleviva

DESIGN FREEDOM MADE EASY: ADVANTIX CLEVIVA.

The bathroom is a place of well-being. The demands of bathroom users are correspondingly high: they want individual styling, with plenty of scope for their own design ideas. The Advantix Cleviva shower channel featuring surface-guided single-point drainage offers just that: high-end bathroom styling and freedom of design. And the best of all: the new shower channels are quick and easy to install and adapt to every bathroom environment.

Find out more:
viega.co.uk/Advantix-Cleviva



The range in overview.

Whatever the installation situation, the Viega Advantix Cleviva shower channel can fulfil virtually any customer wishes. The set is also available as a complete channel in 800 mm, 1,000 mm and 1,200 mm lengths and 95 mm height (model: 4981.10) or as a reconstruction variant (model: 4981.11).



Model: 4981.80
Standard drain unit
Construction height:
95–155 mm
Water seal level: 50 mm
Drainage capacity: 0,5–0,7 l/s*



Model: 4981.81
Reconstruction drain unit
Construction height:
from 70 mm
Water seal level: 25 mm
Drainage capacity: 0,4–0,55 l/s*

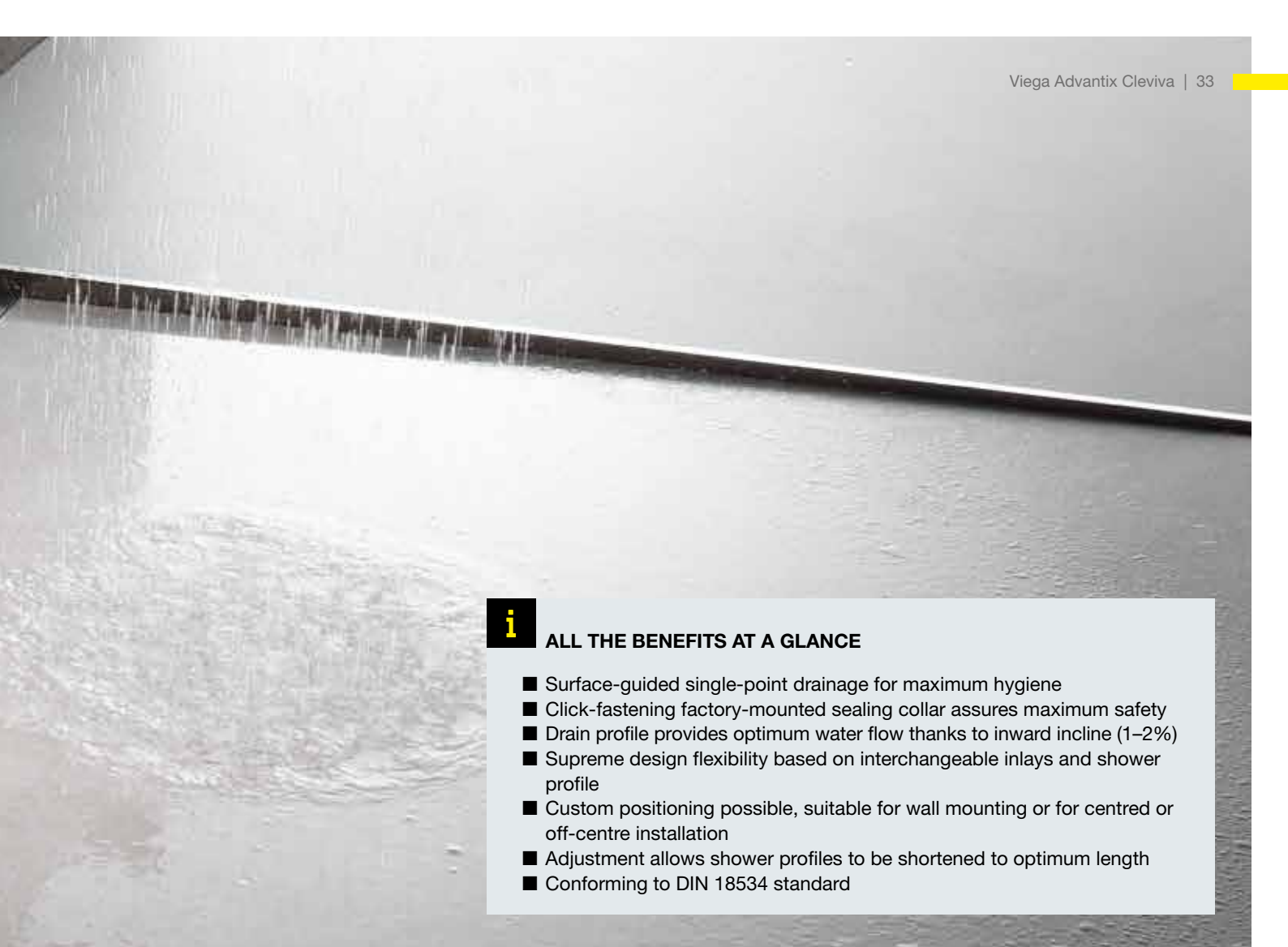


Model: 4981.90
Vertical drain unit
Water seal level from 25 mm
without odour trap
Drainage capacity: 0,5–0,6 l/s

Model: 4981.30, 4981.31, 4981.32
Profile lengths: 800, 1,000, 1,200 mm
Material: stainless steel 1.4301



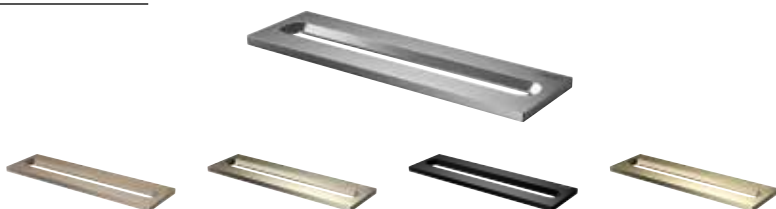
*Criteria: water accumulation height, design inlay and dirt trap



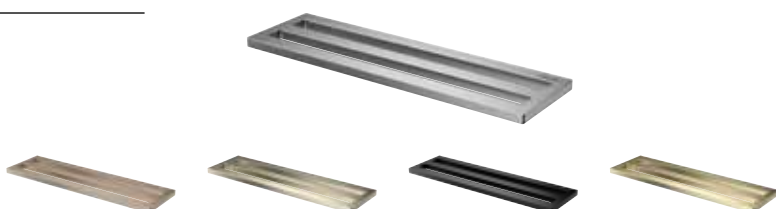
ALL THE BENEFITS AT A GLANCE

- Surface-guided single-point drainage for maximum hygiene
- Click-fastening factory-mounted sealing collar assures maximum safety
- Drain profile provides optimum water flow thanks to inward incline (1-2%)
- Supreme design flexibility based on interchangeable inlays and shower profile
- Custom positioning possible, suitable for wall mounting or for centred or off-centre installation
- Adjustment allows shower profiles to be shortened to optimum length
- Conforming to DIN 18534 standard

**Model: 4981.50
Inlay Visign C1**



**Model: 4981.60
Inlay Visign C2**



**Model: 4923.5
Pipe isolation**



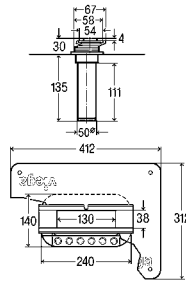
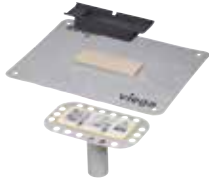
**Model: 4914.90
Sound insulating element**



**Model: 4965.90
Tool**



INSTALLATION HEIGHT FROM 25 MM



Advantix Cleviva shower channel drain vertical

- for bonded sealing (tiled shower)
- without: odour trap

Components

mounting flange, pre-assembled sealing collar, height adjustment piece, sieve insert

Technical data

drainage capacity accumulation height 10 mm (in accordance with EN 1253) 0.5 l/s
 drainage capacity accumulation height 20 mm (in accordance with EN 1253) 0.6 l/s

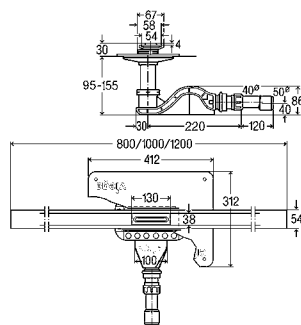
Note

The indicated drainage capacity will be reached with sieve insert.

Model 4981.90

| DN | PU | Article | £ |
|----|----|---------|--------|
| 50 | 1 | 797 270 | 105.45 |

INSTALLATION HEIGHT FROM 95 MM



Advantix Cleviva shower channel with Advantix inlay Visign C1

- for bonded sealing (tiled shower)
- stainless steel 1.4301

Components

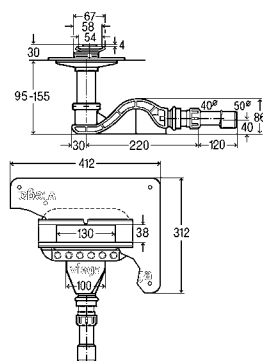
shower channel profile, inlay, odour trap, mounting flange, pre-assembled sealing collar, height adjustment piece, drain pipe, sieve insert, fixing set

Technical data

water seal height 50 mm
 drainage capacity accumulation height 10 mm (in accordance with EN 1253) 0.5–0.65 l/s
 drainage capacity accumulation height 20 mm (in accordance with EN 1253) 0.55–0.7 l/s

Model 4981.10

| L | CH | DN | Version | PU | Article | £ |
|-------|--------|-------|---------|----|---------|--------|
| 800 | 95–155 | 40/50 | brushed | 1 | 794 460 | 562.52 |
| 1.000 | 95–155 | 40/50 | brushed | 1 | 794 477 | 608.47 |
| 1.200 | 95–155 | 40/50 | brushed | 1 | 794 484 | 662.59 |



Advantix Cleviva shower channel base unit

- for bonded sealing (tiled shower)

Components

odour trap, mounting flange, pre-assembled sealing collar, height adjustment piece, drain pipe, sieve insert

Technical data

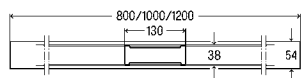
Water seal level 50 mm
 drainage capacity accumulation height 10 mm (in accordance with EN 1253) 0.5–0.65 l/s
 drainage capacity accumulation height 20 mm (in accordance with EN 1253) 0.55–0.7 l/s

Model 4981.80

| BH | DN | PU | Article | £ |
|--------|-------|----|---------|--------|
| 95–155 | 40/50 | 1 | 794 408 | 216.35 |



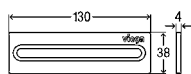
ADVANTIX CLEVIVA SHOWER CHANNELS ACCESSORIES

**Advantix Cleviva shower channel profile**

- suitable for Advantix Cleviva shower channel base unit model 4981.80, 4981.81, Advantix Cleviva shower channel drain vertical model 4981.90
- stainless steel 1.4301

| Model | L | Version stainless steel | PU | Article | £ |
|---------|-------|------------------------------|----|----------------------|--------|
| 4981.30 | 800 | brushed | 1 | 794 118 | 265.05 |
| | | copper/gold-coloured brushed | 1 | 794 262 ¹ | 452.89 |
| | | champagne brushed | 1 | 794 279 ¹ | 452.89 |
| | | black brushed | 1 | 794 224 ¹ | 452.89 |
| | | gold-coloured brushed | 1 | 794 248 ¹ | 452.89 |
| 4981.31 | 1.000 | brushed | 1 | 794 125 | 311.02 |
| | | copper/gold-coloured brushed | 1 | 794 323 ¹ | 548.75 |
| | | champagne brushed | 1 | 794 330 ¹ | 548.75 |
| | | black brushed | 1 | 794 286 ¹ | 548.75 |
| | | gold-coloured brushed | 1 | 794 309 ¹ | 548.75 |
| 4981.32 | 1.200 | brushed | 1 | 794 132 | 365.11 |
| | | copper/gold-coloured brushed | 1 | 794 385 ¹ | 668.65 |
| | | champagne brushed | 1 | 794 392 ¹ | 668.65 |
| | | black brushed | 1 | 794 347 ¹ | 668.65 |
| | | gold-coloured brushed | 1 | 794 361 ¹ | 668.65 |

¹⁾ PVD-coated

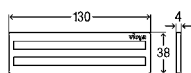
**Advantix Cleviva shower channel inlay****Visign C1****single inlet opening**

- suitable for Advantix Cleviva shower channel base unit model 4981.80, 4981.81, Advantix Cleviva shower channel drain vertical model 4981.90
- stainless steel 1.4301

Model 4981.50

| Version stainless steel | PU | Article | £ |
|------------------------------|----|----------------------|--------|
| brushed | 1 | 794 095 | 81.18 |
| copper/gold-coloured brushed | 1 | 794 040 ¹ | 127.76 |
| champagne brushed | 1 | 794 156 ¹ | 127.76 |
| black brushed | 1 | 794 002 ¹ | 127.76 |
| gold-coloured brushed | 1 | 794 026 ¹ | 127.76 |

¹⁾ PVD-coated

**Advantix Cleviva shower channel inlay****Visign C2****double inlet opening**

- suitable for Advantix Cleviva shower channel base unit model 4981.80, 4981.81, Advantix Cleviva shower channel drain vertical model 4981.90
- stainless steel 1.4301

Model 4981.60

| Version stainless steel | PU | Article | £ |
|------------------------------|----|----------------------|--------|
| brushed | 1 | 794 101 | 91.98 |
| copper/gold-coloured brushed | 1 | 794 200 ¹ | 147.84 |
| champagne brushed | 1 | 794 217 ¹ | 147.84 |
| black brushed | 1 | 794 163 ¹ | 147.84 |
| gold-coloured brushed | 1 | 794 187 ¹ | 147.84 |

¹⁾ PVD-coated



Advantix Cleviva shower channel inlay: bottom left – Visign C1, single inlet opening; top right – Visign C2, double inlet opening.



For perfect hygiene and style

Install a beautiful design element whose internal slope and single-point drain not only ensure smooth, unimpeded drainage for optimum water flow but also make cleaning particularly easy. The Viega shower channel is designed in such a way that the open drain profile no longer creates any space for dirt deposits and that grate removal is no longer necessary. The drain profile can be cleaned with a cloth in no time.

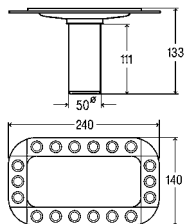
Flexibility comes as standard

A shower channel that will accommodate any design idea while offering the highest standardised quality in terms of material, hygiene and flexibility. The Advantix Cleviva can be extended to any length. The profile has a flat end surface on both ends. This allows for several complete models to be arranged in line.

Intermediate lengths can be created by trimming 10 cm off the level profile ends. Additional trimming to a maximum length of 300 mm is possible. Alongside the standard drain for construction heights from 95 mm, a flat drain is also available for renovation projects with installation heights from 70 mm.

Great shape

Viega Advantix Cleviva's great flexibility in terms of use and assembly is only matched by the quality of its material. The stainless steel 1.4301 used is 4 mm thick, torsion-free and bend-resistant and therefore cannot be deformed.

**Advantix Cleviva mounting flange**

- suitable for Advantix Cleviva shower channel model 4981.10, 4981.11, Advantix Cleviva shower channel base unit model 4981.80, 4981.81, Advantix Cleviva shower channel drain vertical model 4981.90

Model 4981.83

| | PU | Article | £ |
|--|----|---------|-------|
| | 1 | 794 439 | 43.29 |

**Advantix Cleviva shower channel fixing set**

- holding clamps, fixing screws, plastic dowels

Model 4981.89

| | PU | Article | £ |
|--|----|---------|-------|
| | 1 | 797 003 | 12.19 |

**Advantix sound protection element**

- for Advantix bath and floor drains
- ageing resistant and permanently elastic, dynamic stiffness $\leq 30 \text{ MN/m}^3$

Model 4914.90

| L | W | H | PU | Article | £ |
|-----|-----|---|----|---------|-------|
| 500 | 350 | 3 | 1 | 790 448 | 13.80 |
| 500 | 350 | 8 | 1 | 791 650 | 28.56 |

**Drain elbow 45°**

- for connection to the waste water system
- non-adhesive

Model 6162.99

| DN | PU | Article | £ |
|-------|----|---------|------|
| 40/50 | 1 | 719 265 | 8.48 |

**Advantix tool**

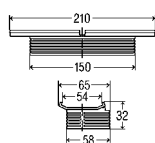
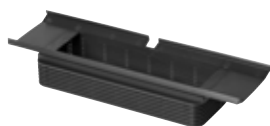
- for removal of all Advantix grates

Model 4965.90

| | PU | Article | £ |
|--|----|---------|-------|
| | 1 | 689 704 | 60.48 |

**Deburrer****Model 2043**

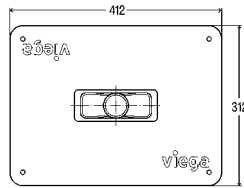
| | PU | Article | £ |
|--|----|---------|-------|
| | 1 | 151 874 | 20.82 |

**Advantix Cleviva height adjustment piece**

- suitable for Advantix Cleviva shower channel model 4981.10, 4981.11, Advantix Cleviva shower channel base unit model 4981.80, 4981.81, Advantix Cleviva shower channel drain vertical model 4981.90

Model 4981.84

| | PU | Article | £ |
|--|----|---------|-------|
| | 1 | 794 446 | 23.04 |



Advantix Cleviva sealing collar

- suitable for Advantix Cleviva shower channel model 4981.10, 4981.11, Advantix Cleviva shower channel base unit model 4981.80, 4981.81, Advantix Cleviva shower channel drain vertical model 4981.90

Model 4981.82

| | PU | Article | £ |
|--|----|---------|-------|
| | 1 | 794 422 | 58.18 |



Advantix Cleviva sieve insert

- suitable for Advantix Cleviva shower channel model 4981.10, 4981.11, Advantix Cleviva shower channel base unit model 4981.80, 4981.81, Advantix Cleviva shower channel drain vertical model 4981.90

Model 4981.85

| | PU | Article | £ |
|--|----|---------|-------|
| | 1 | 794 453 | 12.19 |



Drain pipe

- for connection to the waste water system
- non-adhesive

Model 4981.86

| DN | PU | Article | £ |
|-------|----|---------|-------|
| 40/50 | 1 | 794 521 | 18.93 |



Drain pipe

- for connection to the waste water system, plug-in connection to UK pipe connection (Inch)
- adhesive

Model 4981.87

| DN | internal-Ø | PU | Article | £ |
|-------|------------|----|---------|-------|
| 40/50 | 43 | 1 | 794 897 | 24.36 |

Our online shower channel configurator is an easy way to help you make the decision that is right for you

veiga.co.uk/Shower-channel-configurator

Viega Advantix shower channels

FEWER COMPONENTS, MORE FLEXIBILITY FOR PLANNING.

Each one of the two channel models – for free installation or wall installation – can be combined with all drains, mounting feet, mounting frames and design grates. It is certainly also possible to replace the grates later.

Base unit



Base unit for free-standing installation in five lengths from 750–1,200 mm
Model 4982.10



Base unit for wall installation in five lengths from 750–1,200 mm
Model 4982.20

Drains



for construction heights from 95 mm, drainage capacity: 0.5 – 0.55 l/s*, water seal level: 50 mm (can be shortened to reconstruction model)
Model 4982.92



Reconstruction model for construction heights from 70 mm, drainage capacity: 0.4 – 0.45 l/s*, water seal level: 25 mm
Model 4982.93



vertical model for construction heights from 40 mm, drainage capacity: 0.9 – 1.1 l/s*, water seal level: 50 mm (fire protection pipe lead-in possible)
Model 4982.94



vertical model without: odour trap
Drainage capacity accumulation height 10 mm 1.2 l/s
Drainage capacity accumulation height 20 mm 1.2 l/s
Model 4982.83

Mounting feet

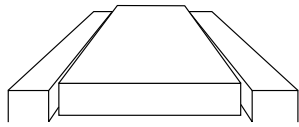


(with rubberised adjustable feet)
Model 4982.90

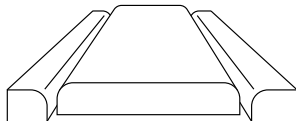


Reconstruction model (with rubberised adjustable feet)
Model 4982.91

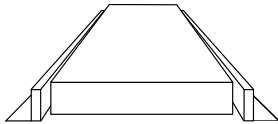
* Measured at the water level height of 10–20 mm above the tile.



The slimmed-down frames and grates
come in squared ...



... and rounded variants ...



... as well as standard frames.



YOUR ADVANTAGES FOR PLANNING

- Small drain with favourable flow conditions ensures good flushing and fewer cleaning intervals
- Easy cleaning of drain and profile also possible with the cleaning spiral
- Available in five lengths: 750, 800, 900, 1,000 and 1,200 mm
- Top quality material selection and workmanship
- Recent reduced design (40 mm), square or rounded in matt or high-gloss polished design, as a tile plate, tile trough, or glass version
- Frame in square contour, rounded contour or standard designs
- Satisfies the soundproofing requirements as per DIN 4109 and/or VDI 4100
- Viega Advantix pipe lead-in R 120 (accessories) as an optimal fire protection solution for floor lead-ins

Mounting frames



Square contour
Model 4982.30



Rounded contour
Model 4982.40



Standard version
of construction height 12-15 mm
Model 4982.45

Design grates



Visign ER10 square contour
brushed Model 4982.50
polished Model 4982.51



Visign ER11 rounded contour
brushed Model 4982.60
polished Model 4982.61



Visign ER12, tileable, rimless
Model 4982.71

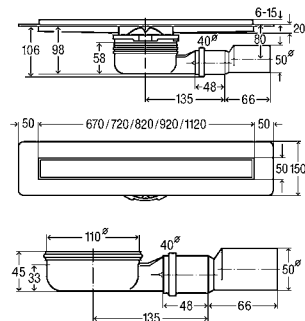


Visign ER13, tileable, with all-round rim
Model 4982.70



Visign ER14 glass version
Black Model 4982.80
Light grey Model 4982.81

ADVANTIX SHOWER CHANNEL INSTALLATION HEIGHT FROM 95 MM, COMPLETE MODELS



Advantix shower channel with Advantix grate Visign ER10

- for bonded sealing (tiled shower) or sealing lane
- stainless steel 1.4301

Components

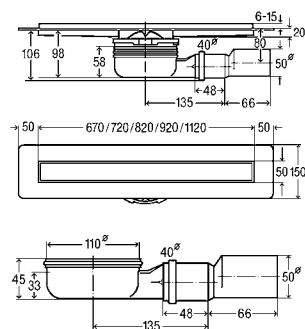
sand-coated sealing flange, polished grate, adjusting feet set, removable odour trap, cleaning possibility for connection line, rotatable drain DN40, adapter to DN50, sieve insert

Technical data

load class K=300 kg
 water seal height 50 mm
 drainage capacity accumulation height 10 mm
 (in accordance with EN 1253) 0.5 l/s
 drainage capacity accumulation height 20 mm
 (in accordance with EN 1253) 0.55 l/s

Model 4983.10

| L | PU | Article | £ |
|------|------|---------|--------|
| 750 | 1/19 | 753 153 | 520.75 |
| 800 | 1/19 | 753 160 | 536.49 |
| 900 | 1/19 | 753 177 | 566.33 |
| 1000 | 1/19 | 753 184 | 652.46 |
| 1200 | 1/19 | 753 191 | 769.90 |



Advantix shower channel with Advantix grate Visign ER13

- or bonded sealing (tiled shower) or sealing lane
- stainless steel 1.4301

Components

sand-coated sealing flange, grate tileable, adjusting feet set, removable odour trap, cleaning possibility for connection line, rotatable drain DN40, adapter to DN50, sieve insert

Technical data

load class K=300 kg
 water seal height 50 mm
 drainage capacity accumulation height 10 mm
 (in accordance with EN 1253) 0.5 l/s
 drainage capacity accumulation height 20 mm
 (in accordance with EN 1253) 0.55 l/s

Model 4983.20

| L | PU | Article | £ |
|------|------|---------|--------|
| 750 | 1/19 | 753 207 | 458.26 |
| 800 | 1/19 | 753 214 | 471.48 |
| 900 | 1/19 | 753 221 | 497.43 |
| 1000 | 1/19 | 753 238 | 571.87 |
| 1200 | 1/19 | 753 245 | 675.55 |


 viega


Advantix shower channel mounting frame

- for all Advantix shower channel grates, flooring height of 12–15 mm (tile + adhesive)
- brushed
- stainless steel 1.4301

Model 4982.45

| L | Version | PU | Article | £ |
|------|---------|----|---------|-------|
| 750 | brushed | 1 | 745 356 | 54.04 |
| 800 | brushed | 1 | 745 363 | 55.71 |
| 900 | brushed | 1 | 745 370 | 57.54 |
| 1000 | brushed | 1 | 745 387 | 60.85 |
| 1200 | brushed | 1 | 745 394 | 67.58 |



Advantix extension set

- for Advantix shower channel grate, extension (15–25 mm) when using natural stone covering

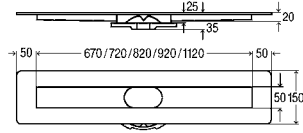
Model 4971.70

| QS | PU | Article | £ |
|----|----|---------|-------|
| 8 | 1 | 593 933 | 80.93 |

QS = Quantity per set

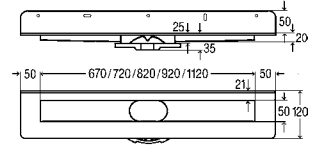
ADVANTIX COMBINATION OVERVIEW

Advantix Shower channel base unit
for bonded sealing (tiled shower) or sealing lane



Model 4982.10

| L | PU | Article | £ |
|------|----|---------|--------|
| 750 | 1 | 736 965 | 244.50 |
| 800 | 1 | 736 972 | 252.80 |
| 900 | 1 | 736 989 | 272.17 |
| 1000 | 1 | 736 996 | 328.72 |
| 1200 | 1 | 737 009 | 392.79 |



Model 4982.20 Wall

| L | PU | Article | £ |
|------|----|---------|--------|
| 750 | 1 | 737 016 | 343.04 |
| 800 | 1 | 737 023 | 356.82 |
| 900 | 1 | 737 030 | 371.68 |
| 1000 | 1 | 737 047 | 392.23 |
| 1200 | 1 | 737 054 | 437.41 |



ADVANTIX SHOWER CHANNEL WITH ODOUR TRAP



Installation height from 95 mm
can be shortened after installation as
reconstruction model
Model 4982.92

| PU | Article | £ |
|----|---------|-------|
| 1 | 737 573 | 34.53 |



Installation height from 70 mm
reconstruction model
Model 4982.93

| PU | Article | £ |
|----|---------|-------|
| 1 | 737 580 | 34.53 |



Installation height from 40 mm
vertical drain
Model 4982.94

| DN | PU | Article | £ |
|----|----|---------|-------|
| 50 | 1 | 737 597 | 52.62 |

ADVANTIX SHOWER CHANNEL WITHOUT ODOUR TRAP



vertical drain
without: odour trap
Model 4982.83

| DN | PU | Article | £ |
|----|----|---------|-------|
| 40 | 1 | 766 955 | 30.24 |



MOUNTING FEET



Installation height 95 – 160 mm
Model 4982.90

| CH | QS | PU | Article | £ |
|--------|----|----|---------|-------|
| 95-160 | 2 | 1 | 737 559 | 30.30 |

QS = Quantity per set



Installation height 70 – 95 mm
reconstruction model
Model 4982.91

| CH | QS | PU | Article | £ |
|-------|----|----|---------|-------|
| 70-95 | 2 | 1 | 737 566 | 29.37 |

QS = Quantity per set

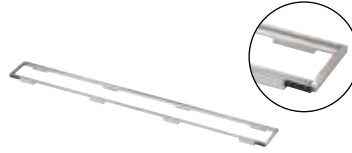


MOUNTING FRAMES



angular contour, brushed
for flooring height of 8–20 mm
Model 4982.30

| L | PU | Article | £ |
|------|----|---------|--------|
| 750 | 1 | 736 804 | 109.72 |
| 800 | 1 | 736 811 | 117.41 |
| 900 | 1 | 736 828 | 122.31 |
| 1000 | 1 | 736 835 | 128.31 |
| 1200 | 1 | 736 842 | 146.51 |



round contour, brushed
for flooring height of 8–20 mm
Model 4982.40

| L | PU | Article | £ |
|------|----|---------|--------|
| 750 | 1 | 737 061 | 109.72 |
| 800 | 1 | 737 078 | 117.41 |
| 900 | 1 | 737 085 | 122.31 |
| 1000 | 1 | 737 092 | 128.31 |
| 1200 | 1 | 737 108 | 146.51 |



standard, brushed
for flooring height of 12–15 mm
Model 4982.45

| L | PU | Article | £ |
|------|----|---------|-------|
| 750 | 1 | 745 356 | 54.04 |
| 800 | 1 | 745 363 | 55.71 |
| 900 | 1 | 745 370 | 57.54 |
| 1000 | 1 | 745 387 | 60.85 |
| 1200 | 1 | 745 394 | 67.58 |



GRATES



Grate Visign ER10
angular contour
for flooring height of 6–15 mm
Model 4982.50 brushed

| L | PU | Article | £ |
|------|----|---------|--------|
| 750 | 1 | 737 153 | 211.51 |
| 800 | 1 | 737 160 | 218.95 |
| 900 | 1 | 737 177 | 229.39 |
| 1000 | 1 | 737 184 | 258.98 |
| 1200 | 1 | 737 191 | 312.35 |

Model 4982.51 polished

| | | | |
|------|---|---------|--------|
| 750 | 1 | 737 207 | 211.51 |
| 800 | 1 | 737 214 | 218.95 |
| 900 | 1 | 737 221 | 229.39 |
| 1000 | 1 | 737 238 | 258.98 |
| 1200 | 1 | 737 245 | 312.35 |



Grate Visign ER11
round contour
for flooring height of 6–15 mm
Model 4982.60 brushed

| L | PU | Article | £ |
|------|----|---------|--------|
| 750 | 1 | 737 252 | 211.51 |
| 800 | 1 | 737 269 | 218.95 |
| 900 | 1 | 737 276 | 229.39 |
| 1000 | 1 | 737 283 | 258.98 |
| 1200 | 1 | 737 290 | 312.35 |

Model 4982.61 polished

| | | | |
|------|---|---------|--------|
| 750 | 1 | 737 306 | 211.51 |
| 800 | 1 | 737 313 | 218.95 |
| 900 | 1 | 737 320 | 229.39 |
| 1000 | 1 | 737 337 | 258.98 |
| 1200 | 1 | 737 344 | 312.35 |



Grate Visign ER14
glas
for flooring height of 6–18 mm
Model 4982.81 glass clear/light grey

| L | PU | Article | £ |
|------|----|---------|--------|
| 750 | 1 | 737 504 | 548.21 |
| 800 | 1 | 737 511 | 616.70 |
| 900 | 1 | 737 528 | 685.27 |
| 1000 | 1 | 737 535 | 753.76 |
| 1200 | 1 | 737 542 | 822.33 |

Model 4982.80 glass clear/black

| | | | |
|------|---|---------|--------|
| 750 | 1 | 737 450 | 548.21 |
| 800 | 1 | 737 467 | 616.70 |
| 900 | 1 | 737 474 | 685.27 |
| 1000 | 1 | 737 481 | 753.76 |
| 1200 | 1 | 737 498 | 822.33 |



Grate Visign ER12
for insertion of a surface of tile or natural stone
of any height
Model 4982.71

| L | PU | Article | £ |
|------|----|---------|--------|
| 750 | 1 | 737 405 | 141.60 |
| 800 | 1 | 737 412 | 146.26 |
| 900 | 1 | 737 429 | 152.43 |
| 1000 | 1 | 737 436 | 169.51 |
| 1200 | 1 | 737 443 | 207.10 |



Grate Visign ER13
for insertion of a surface of tile or natural stone
of any height
with all-round rim 10 mm
Model 4982.70

| L | PU | Article | £ |
|------|----|---------|--------|
| 750 | 1 | 737 351 | 149.04 |
| 800 | 1 | 737 368 | 153.94 |
| 900 | 1 | 737 375 | 160.50 |
| 1000 | 1 | 737 382 | 178.39 |
| 1200 | 1 | 737 399 | 217.99 |

Article 745 400: Advantix shower channel accessory set 23–36 mm. Suitable for Advantix shower channel mounting frame Model 4982.30 and 4982.40.

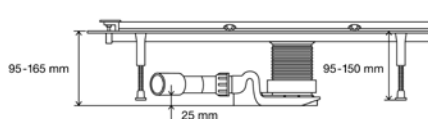
Article 593 933: Advantix extension set 15–25 mm for Advantix shower channel grate, extension (15–25 mm) when using natural stone covering.

Viega Advantix Vario

INDIVIDUALITY AT ITS MOST BEAUTIFUL.

Planning with the largest possible flexibility: Vario can both be installed in the wall and on the wall or freely in the room – optionally in straight shape, L or U shape, adapted to the architecture and the required drainage capacity.

Find out more:
viega.co.uk/Advantix-Vario



Variable also in height: Construction height between 95 and 165 mm.

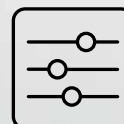
i

ALL THE BENEFITS AT A GLANCE

- Individual lengths from 300 to 2,800 mm (can be sawn by hand)
- Installation possible in straight line, or L or U shape
- Minimum construction height 70 mm with a drainage capacity of 0.55 l/s
- Maximum construction height 165 mm with a drainage capacity of 0.8 l/s
- Siphonic with efficient self-cleaning features
- Bonded sealing with liquid foil
- Easy to clean thanks to smooth-walled base unit without dead spaces



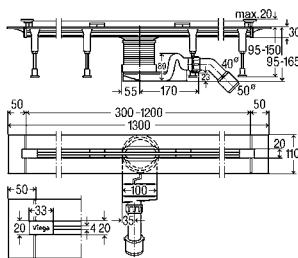
Our online shower channel configurator is an easy way to help you make the decision that is right for you



veiga.co.uk/Advantix-Vario-configurator



ADVANTIX VARIO – COMPLETE SETS



Advantix Vario shower channel continuously cut to length

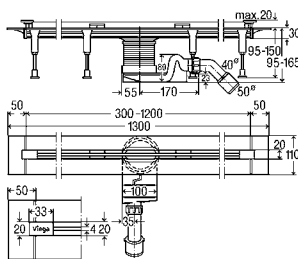
- for bonded sealing (tiled shower) or sealing lane
- equipped with Advantix Vario shower channel standing grate model 4965.30
- high-quality plastic

Equipment

adjusting feet set, closing caps, self-cleaning drain set, height-adjustable standing grate holder, height adjustment piece, sealing flange, sealing accessories, saw guide

Model 4965.20

| L | CH | DN | Version | PU | Article | £ |
|----------|--------|-------|---------|----|----------------|---------------|
| 300-1200 | 95-150 | 40/50 | brushed | 1 | 704 353 | 569.40 |



Advantix Vario shower channel continuously cut to length

- for bonded sealing (tiled shower) or sealing lane
- equipped with Advantix Vario shower channel standing grate model 4965.31
- high-quality plastic

Equipment

adjusting feet set, closing caps, self-cleaning drain set, height-adjustable standing grate holder, height adjustment piece, sealing flange, sealing accessories, saw guide

Model 4965.21

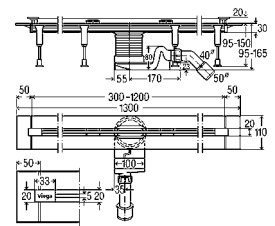
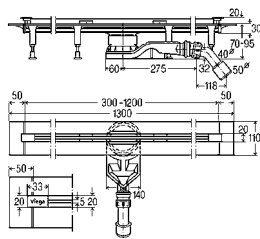
| L | CH | DN | Version | PU | Article | £ |
|----------|--------|-------|----------|----|----------------|---------------|
| 300-1200 | 95-150 | 40/50 | polished | 1 | 704 360 | 569.40 |

Viega Advantix Vario

INDIVIDUAL LENGTHS.

FOR A CONSTRUCTION LENGTH BETWEEN 800 AND 2,400 MM, THE FOLLOWING ITEMS ARE REQUIRED:
 (Connecting two channels in a straight line increases the drainage capacity from 0.8 to 1.6 l/s)

2x



Advantix Vario shower channel base unit continuously cut to length, 70 mm (reconstruction model)
 ■ for bonded sealing (tiled shower) or sealing lane
 ■ plastic high-quality
Model 4966.10

| L | CH | DN | PU | Article | £ |
|----------|-------|-------|----|---------|--------|
| 300-1200 | 70-95 | 40/50 | 1 | 721 671 | 455.90 |

Advantix Vario shower channel base unit continuously cut to length
 ■ for bonded sealing (tiled shower) or sealing lane
 ■ plastic high-quality
Model 4965.10

| L | CH | DN | PU | Article | £ |
|----------|--------|-------|----|---------|--------|
| 300-1200 | 95-150 | 40/50 | 1 | 686 277 | 455.90 |

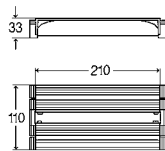


2x



Advantix Vario shower channel standing grate
 ■ suitable for Advantix Vario shower channel base unit model 4965.10, 4966.10
 ■ stainless steel 1.4301

| Model | Visign | L | Version | PU | Article | £ |
|---------|--------|----------|----------|----|---------|--------|
| 4965.30 | SR1 | 300-1200 | brushed | 1 | 686 284 | 113.54 |
| 4965.31 | SR2 | 300-1200 | polished | 1 | 686 291 | 113.54 |
| 4965.32 | SR3 | 300-1200 | black | 1 | 711 870 | 278.28 |
| 4965.33 | SR4 | 300-1200 | white | 1 | 711 887 | 278.28 |



Advantix Vario connection piece
 ■ for connection of two shower channels
 ■ suitable for Advantix Vario shower channel base unit model 4965.10, 4966.10
 ■ plastic high-quality
Model 4965.12

| L | W | PU | Article | £ |
|-----|-----|----|---------|--------|
| 210 | 110 | 1 | 708 917 | 124.44 |



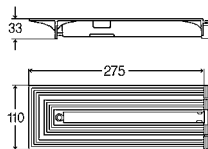
Advantix Vario accessory set
Model 4965.50

| Version | PU | Article | £ |
|----------|----|---------|--------|
| brushed | 1 | 711 795 | 78.64 |
| polished | 1 | 711 801 | 78.64 |
| black | 1 | 711 818 | 137.56 |
| white | 1 | 711 825 | 137.56 |



FOR A CONSTRUCTION LENGTH BETWEEN 2,400 AND 2,800 MM, THE FOLLOWING ADDITIONAL ITEMS ARE REQUIRED:

1-2 x

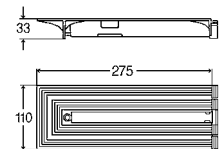


Advantix Vario End closing piece

- for extension
 - suitable for Advantix Vario shower channel base unit model 4965.10
 - plastic high-quality
- Model 4965.16**

| L | B | PU | Article | £ |
|-----|-----|----|---------|--------|
| 275 | 110 | 1 | 708 931 | 144.04 |

B = width



Advantix Vario End closing piece 70 mm (reconstruction model)

- for extension
 - suitable for Advantix Vario shower channel base unit model 4966.10
 - plastic high-quality
- Model 4966.16**

| L | B | PU | Article | £ |
|-----|-----|----|---------|--------|
| 275 | 110 | 1 | 721 695 | 144.04 |

B = width



1-2 x



Advantix Vario shower channel standing grate set

- suitable for Advantix Vario connection piece 90° model 4965.14, Advantix Vario end closing piece model 4965.16, Advantix Vario connection piece 90° model 4966.14, Advantix Vario end closing piece model 4966.16
- stainless steel 1.4301

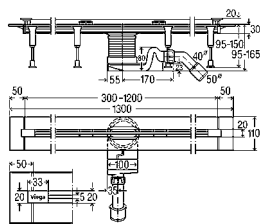
| Model | Visign | L | Version | PU | Article | £ |
|---------|--------|-----|----------|----|---------|--------|
| 4965.60 | SR1 | 200 | brushed | 1 | 711 832 | 124.44 |
| 4965.61 | SR2 | 200 | polished | 1 | 711 849 | 124.44 |
| 4965.62 | SR3 | 200 | black | 1 | 711 856 | 225.90 |
| 4965.63 | SR4 | 200 | white | 1 | 711 863 | 225.90 |

Viega Advantix Vario – Corner variant ALWAYS IN TOP FORM.



**CORNER INSTALLATIONS WITH LEG LENGTHS BETWEEN 500 MM AND 1,200 MM
FOR INSTALLING A CORNER VARIANT WITH LEGS OF MAX. 1,200 LENGTH, THE FOLLOWING ITEMS ARE REQUIRED:**

2x



**Advantix Vario shower channel base unit
continuously cut to length**

- for bonded sealing (tiled shower) or sealing lane
- plastic high-quality

Model 4965.10

| L | CH | DN | PU | Article | £ |
|----------|--------|-------|----|---------|--------|
| 300-1200 | 95-150 | 40/50 | 1 | 686 277 | 455.90 |

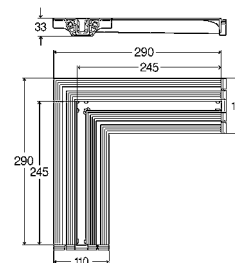
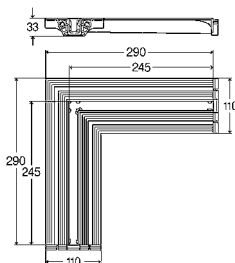
2x



Advantix Vario shower channel standing grate

- suitable for Advantix Vario shower channel base unit model 4965.10, 4966.10
- stainless steel 1.4301

| Model | Visign | L | Version | PU | Article | £ |
|---------|--------|----------|----------|----|---------|--------|
| 4965.30 | SR1 | 300-1200 | brushed | 1 | 686 284 | 113.54 |
| 4965.31 | SR2 | 300-1200 | polished | 1 | 686 291 | 113.54 |
| 4965.32 | SR3 | 300-1200 | black | 1 | 711 870 | 278.28 |
| 4965.33 | SR4 | 300-1200 | white | 1 | 711 887 | 278.28 |



Advantix Vario Connection piece 90°

- for connection of two shower channels
 - suitable for Advantix Vario shower channel base unit model 4965.10
 - plastic high-quality
- Model 4965.14**

| L1 | L2 | B | PU | Article | £ |
|-----|-----|-----|----|---------|--------|
| 290 | 290 | 110 | 1 | 708 924 | 170.22 |

B = width

**Advantix Vario Connection piece 90°
70 mm (reconstruction model)**

- for connection of two shower channels
 - suitable for Advantix Vario shower channel base unit model 4966.10
 - plastic high-quality
- Model 4966.14**

| L1 | L2 | B | PU | Article | £ |
|-----|-----|-----|----|---------|--------|
| 290 | 290 | 110 | 1 | 721 688 | 170.22 |

B = width



Advantix Vario accessory set

- suitable for Advantix Vario connection piece 90° model 4965.14, 4966.14
- Model 4965.51**

| Version | PU | Article | £ |
|----------|----|---------|--------|
| brushed | 1 | 711 788 | 78.64 |
| polished | 1 | 711 757 | 78.64 |
| black | 1 | 711 771 | 137.56 |
| white | 1 | 711 764 | 137.56 |

If required, the length of the two shower channels can be extended to max. 200 mm. For this, you'll need again the Advantix Vario end closing piece and the Advantix Vario standing grate set (see p. 49).

Viega Advantix Vario wall drains

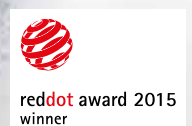
CAN BE SHORTENED ACCURATELY TO THE MILLIMETRE – FOR LIMITLESS FLEXIBILITY.

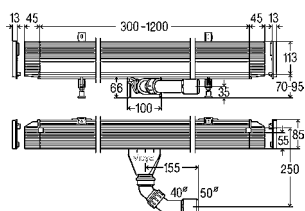
The Viega Advantix wall drain offers different variants for any possible installation situation. The height of the elements can also be easily adjusted to the situation on site. Thus, the Advantix Vario models offer maximum installation flexibility and maximum design individuality.



ALL THE BENEFITS AT A GLANCE

- The small wall installation depth of 25 mm into the wall cover allows for highly flexible installation also in small bathrooms
- Uniform laying of the floor covering up to the wall without gradients
- Easy to clean thanks to smooth-walled base unit without dead spaces
- Slimline design with standing grate and cover plates in four colours





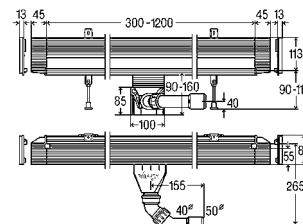
Advantix Vario shower channel base unit wall

continuously cut to length, 70 mm (reconstruction model)

- for bonded sealing (tiled shower) or sealing lane
- plastic high-quality

Model 4968.10

| L | BH | DN | PU | Article | £ |
|----------|--------|-------|----|----------------|---------------|
| 300-1200 | 70-100 | 40/50 | 1 | 736 736 | 519.97 |



Advantix Vario shower channel base unit wall

continuously cut to length

- for bonded sealing (tiled shower) or sealing lane
- plastic high-quality

Model 4967.10

| L | BH | DN | PU | Article | £ |
|----------|--------|-------|----|----------------|---------------|
| 300-1200 | 90-160 | 40/50 | 1 | 736 552 | 519.97 |



Advantix Vario shower channel standing grate wall

- suitable for Advantix Vario shower channel base unit wall model 4967.10, 4968.10
- stainless steel 1.4301

| Model | Visign | L | Version | PU | Article | £ |
|----------------|--------|----------|----------|----|----------------|---------------|
| 4967.30 | SR1 | 300-1200 | brushed | 1 | 736 569 | 113.54 |
| 4967.31 | SR2 | 300-1200 | polished | 1 | 736 576 | 113.54 |
| 4967.32 | SR3 | 300-1200 | black | 1 | 736 583 | 278.28 |
| 4967.33 | SR4 | 300-1200 | white | 1 | 736 590 | 278.28 |



Advantix Vario shower channel accessory set wall

- suitable for Advantix Vario shower channel standing grate wall model 4967.30, 4967.31, 4967.32, Advantix Vario shower channel standing grate model 4967.33

Model 4967.86

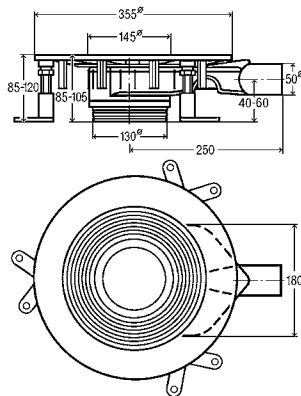
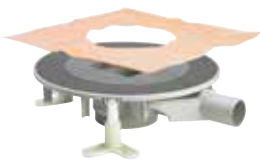
| L | Version | PU | Article | £ |
|----------|----------|----|----------------|--------------|
| 300-1200 | brushed | 1 | 736 606 | 63.76 |
| 300-1200 | polished | 1 | 736 613 | 63.76 |
| 300-1200 | black | 1 | 736 620 | 98.33 |
| 300-1200 | white | 1 | 736 637 | 98.33 |

Viega Advantix bathroom drains

TURN SHOWERING INTO AN EXPERIENCE.

Advantix bathroom drains are suitable for the flowthrough of small to medium water volumes, e.g. in private apartments. Advantix floor drains, on the other hand, are suitable for handling large flowthrough volumes, e.g. in hospitals, sport halls and swimming pool showering areas.

ADVANTIX BASE UNIT



Advantix Top Bath/floor drain base unit

- for bonded sealing (tiled shower) with sealing mat
- system dimension 100, system dimension 145
- without: top

Model 4914.2

| DN | CH | HD | PU | Article | £ |
|----|--------|----|----|---------|--------|
| 50 | 85-120 | ✓ | 1 | 669 232 | 179.87 |

HD = Horizontal drain

ADVANTIX COMBINATION OVERVIEW

base unit

top frame

Advantix top frame angular Model 4949.1

Advantix top frame rounded Model 4962

Visign grates, angular

Model 4932.2 usable without top frame

Visign grates, round

COMPOSE YOUR OWN SET.

Select products from the various sections, and source everything you need for your project.

ADVANTIX TOP FRAMES



Advantix Top frame
 ■ system dimension 100
 ■ stainless steel 1.4404 frame
Model 4949.1

| L | W | PU | Article | £ |
|-----|-----|----|-----------------------|-------|
| 100 | 100 | 1 | 488 987 ¹⁾ | 58.61 |

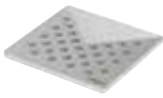
¹⁾ for Advantix grate 94x94 mm



Advantix Top frame
 ■ for Advantix grate round Ø 110 mm
 ■ system dimension 100
 ■ stainless steel 1.4404 frame
Model 4962

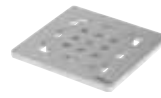
| Ø | PU | Article | £ |
|-----|----|---------|-------|
| 120 | 1 | 586 416 | 74.75 |

VISIGN GRATES, ANGULAR



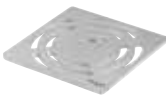
Advantix Grate Visign RS1
 stainless steel 1.4301, solid,
 lasered inlet design, matt surface finish
Model 4928.1

| L | W | H | PU | Article | £ |
|----|----|---|----|---------|--------|
| 94 | 94 | 5 | 1 | 492 281 | 197.32 |



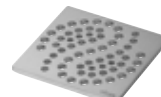
Advantix Grate Visign RS2
 stainless steel 1.4301, solid,
 lasered inlet design, matt surface finish
Model 4928.2

| L | W | H | PU | Article | £ |
|----|----|---|----|---------|--------|
| 94 | 94 | 5 | 1 | 492 298 | 197.32 |



Advantix Grate Visign RS3
 stainless steel 1.4301, solid,
 lasered inlet design, matt surface finish
Model 4928.3

| L | W | H | PU | Article | £ |
|----|----|---|----|---------|--------|
| 94 | 94 | 5 | 1 | 492 304 | 197.32 |



Advantix Grate Visign RS4
 stainless steel 1.4301, solid,
 lasered inlet design, matt surface finish
Model 4928.4

| L | W | H | PU | Article | £ |
|----|----|---|----|---------|--------|
| 94 | 94 | 5 | 1 | 492 311 | 197.32 |



Advantix Grate Visign RS5
 tempered glass (TG), stainless steel disc RS5

| Model | L | CH | DN | Version | PU | Article | £ |
|---------|----|----|----|----------------------------|----|---------|--------|
| 4976.10 | 94 | 94 | 5 | glass clear/ light grey | 1 | 617 127 | 354.13 |
| 4976.11 | 94 | 94 | 5 | glass clear/ black | 1 | 617 141 | 354.13 |



Advantix Top tileable
 usable without top frame
Model 4932.2

| L | W | PU | Article | £ |
|-----|-----|----|---------|-------|
| 100 | 100 | 1 | 709 112 | 93.03 |

VISIGN GRATES, ROUND



Advantix Grate Visign RS11
 stainless steel 1.4301, solid,
 lasered inlet design, matt surface finish
Model 4962.1

| Ø | H | PU | Article | £ |
|-----|---|----|---------|--------|
| 110 | 5 | 1 | 586 423 | 197.32 |



Advantix Grate Visign RS12
 stainless steel 1.4301, solid,
 lasered inlet design, matt surface finish
Model 4962.2

| Ø | H | PU | Article | £ |
|-----|---|----|---------|--------|
| 110 | 5 | 1 | 586 430 | 197.32 |



Advantix Grate Visign RS13
 stainless steel 1.4301, solid,
 lasered inlet design, matt surface finish
Model 4962.3

| Ø | H | PU | Article | £ |
|-----|---|----|---------|--------|
| 110 | 5 | 1 | 586 447 | 197.32 |



Visign Grate RS15
 tempered glass (TG), stainless steel disc

| Model | Ø | CH | Version | PU | Article | £ |
|---------|-----|----|----------------------------|----|---------|--------|
| 4976.30 | 110 | 5 | glass clear/ light grey | 1 | 617 165 | 354.13 |
| 4976.31 | 110 | 5 | glass clear/ black | 1 | 617 189 | 354.13 |

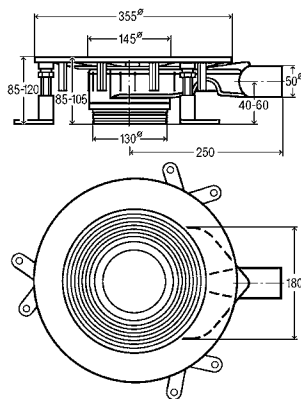
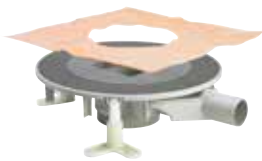


Viega Advantix floor drains

THE FLEXIBLE MODULAR SYSTEM FOR ALL FIELDS OF PLANNING.

For many decades now the Advantix product range has been continuously advanced by our engineers – with the outcome that the suitable drain can be offered for all planning interfaces.

ADVANTIX BASE UNIT



Advantix Top Bath/floor drain base unit

- for bonded sealing (tiled shower) with sealing mat
- system dimension 100, system dimension 145
- without: top

Model 4914.2

| DN | CH | HD | PU | Article | £ |
|----|--------|----|----|---------|--------|
| 50 | 85-120 | ✓ | 1 | 669 232 | 179.87 |

HD = Horizontal drain

Angular or round?
Choose the matching top frame and a grate on the right-hand side.

ADVANTIX TOP FRAMES



Advantix Top frame

- for Advantix grate 143x143 mm
- system dimension 145

Model 4949.3

| L | W | PU | Article | £ |
|-----|-----|----|---------|--------|
| 150 | 150 | 1 | 489 038 | 102.16 |



Advantix Top frame

- for Advantix grate round Ø 145 mm
- system dimension 145

Model 4963

| Ø | PU | Article | £ |
|-----|----|---------|-------|
| 155 | 1 | 586 409 | 93.47 |



VISIGN GRATES, ANGULAR



Advantix grate
stainless steel 1.4301, drawn
Model 4933.4

| L | W | H | PU | Article | £ |
|-----|-----|---|----|----------------------|-------|
| 143 | 143 | 5 | 1 | 554 040 ¹ | 41.23 |
| 143 | 143 | 5 | 1 | 554 859 ² | 52.94 |

1) non-screwable
2) screwable



Advantix grate Visign RS1
stainless steel 1.4301, solid,
lasered inlet design, matt surface finish
Model 4929.1

| L | W | H | PU | Article | £ |
|-----|-----|---|----|---------|--------|
| 143 | 143 | 5 | 1 | 492 328 | 218.07 |



Advantix grate Visign RS2
stainless steel 1.4301, solid,
lasered inlet design, matt surface finish
Model 4929.2

| L | W | H | PU | Article | £ |
|-----|-----|---|----|---------|--------|
| 143 | 143 | 5 | 1 | 492 335 | 218.07 |



Advantix grate Visign RS3
stainless steel 1.4301, solid,
lasered inlet design, matt surface finish
Model 4929.3

| L | W | H | PU | Article | £ |
|-----|-----|---|----|---------|--------|
| 143 | 143 | 5 | 1 | 492 342 | 218.07 |



Advantix grate Visign RS4
stainless steel 1.4301, solid,
lasered inlet design, matt surface finish
Model 4929.4

| L | W | H | PU | Article | £ |
|-----|-----|---|----|---------|--------|
| 143 | 143 | 5 | 1 | 492 359 | 218.07 |



Advantix-Rost Visign RS5
tempered glass (TG), stainless steel disc

| Model | L | W | H | Version | PU | Article | £ |
|---------|-----|-----|---|----------------------------|----|----------|--------|
| 4976.20 | 143 | 143 | 5 | glass clear/ light grey | 1 | 617 134* | 472.20 |
| 4976.21 | 143 | 143 | 5 | glass clear/ black | 1 | 617 158* | 472.20 |

* = Discontinued, limited availability

VISIGN GRATES, ROUND



Advantix grate Visign RS11
stainless steel 1.4301, solid,
lasered inlet design, matt surface finish
Model 4963.1

| Ø | H | PU | Article | £ |
|-----|---|----|---------|--------|
| 145 | 5 | 1 | 586 669 | 218.07 |



Advantix-Rost Visign RS12
stainless steel 1.4301, solid,
lasered inlet design, matt surface finish
Model 4963.2

| Ø | H | PU | Article | £ |
|-----|---|----|----------|--------|
| 145 | 5 | 1 | 586 676* | 218.07 |

* = Discontinued, limited availability

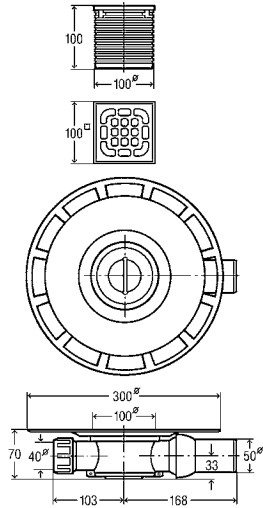
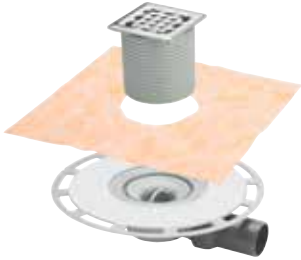


Advantix grate Visign RS15
tempered glass (TG), stainless steel disc
Model 4976.40

| Ø | H | Version | PU | Article | £ |
|-----|---|------------------------|----|----------|--------|
| 145 | 5 | clear/light grey glass | 1 | 617 172* | 472.20 |

* = Discontinued, limited availability

ADVANTIX BATH DRAINS



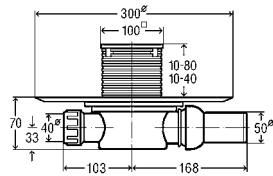
Advantix bath drain

- for bonded sealing (tiled shower) with sealing mat
- system dimension 100

Model 4939

| DN | HD | PU | Article | £ |
|----|----|----|---------|--------|
| 50 | ✓ | 1 | 565 701 | 225.60 |

HD = Horizontal drain



Advantix bath drain

- for bonded sealing (tiled shower) with sealing mat
- system dimension 100, odour proof

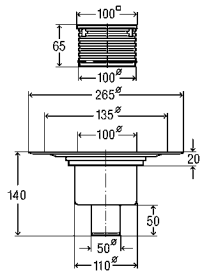
Model 4936.4

| DN | HD | PU | Article | £ |
|----|----|----|----------------------|--------|
| 50 | ✓ | 1 | 583 231 ¹ | 242.08 |
| 50 | ✓ | 1 | 617 288 ² | 290.16 |

HD = Horizontal drain

1) top with plastic frame

2) top with frame made of stainless steel 1.4404



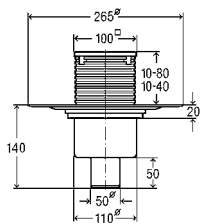
Advantix bath drain

- system dimension 100

Model 4926

| DN | VD | PU | Article | £ |
|----|----|----|---------|-------|
| 50 | ✓ | 1 | 556 914 | 69.30 |

VD = Vertical drain



Advantix bath drain

- system dimension 100, odour proof

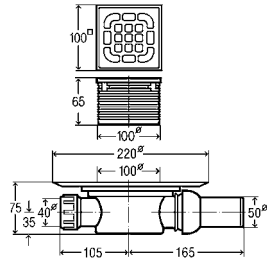
Model 4936.3

| DN | VD | PU | Article | £ |
|----|----|----|----------------------|--------|
| 50 | ✓ | 1 | 583 224 ¹ | 141.38 |
| 50 | ✓ | 1 | 617 271 ² | 189.47 |

VD = Vertical drain

1) top with plastic frame

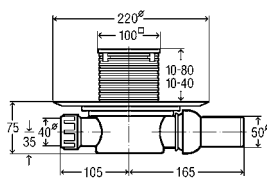
2) top with frame made of stainless steel 1.4404



Advantix bath drain
 ■ system dimension 100
Model 4935.1

| DN | HD | PU | Article | £ |
|----|----|------|----------------|--------------|
| 50 | ✓ | 1/10 | 557 119 | 63.15 |

HD = Horizontal drain



Advantix bath drain
 ■ system dimension 100, odour proof
Model 4936.2

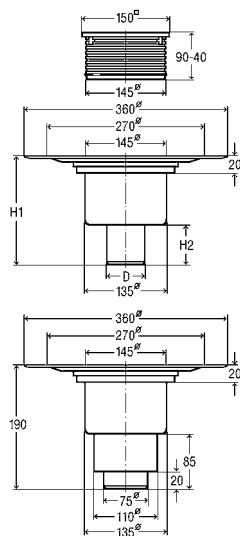
| DN | Aw | PU | Article | £ |
|----|----|----|----------------------------|---------------|
| 50 | ✓ | 1 | 583 217¹ | 141.38 |
| 50 | ✓ | 1 | 583 248² | 189.47 |

HD = Horizontal drain

¹) top with plastic frame

²) top with frame made of stainless steel 1.4404

ADVANTIX FLOOR DRAINS



Advantix floor drain
 ■ system dimension 145
Model 4951.1



| DN | d | H1 | H2 | DC 10 [l/s] | DC 20 [l/s] | VD | PU | Article | £ |
|--------|----|-----|----|-------------|-------------|----|----|----------------|---------------|
| 50 | 50 | 160 | 50 | 0,65 | 1,5 | ✓ | 1 | 557 188 | 123.64 |
| 70 | 75 | 175 | 65 | 0,7 | 1,6 | ✓ | 1 | 557 195 | 123.64 |
| 70/100 | | 190 | 85 | 0,9 | 1,4 | ✓ | 1 | 557 201 | 123.64 |

DC 10 = Drainage capacity accumulation height 10 mm

DC 20 = Drainage capacity accumulation height 20 mm

VD = Vertical drain

Viega bath drains

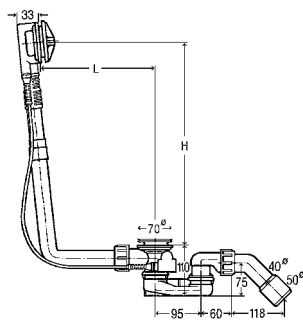
TIMELESS DESIGN, INNOVATIVE TECHNOLOGY.

Small construction heights, high-quality finish, excellent design and convincing performances are only a few of the properties meeting the high requirements on the functional bathtub drain sets in bathroom design.



Multiplex Trio MT5 with inlet function

MULTIPLEX



Multiplex Drain/overflow

Visign M5

flat version; only 33 mm space required behind the bathtub

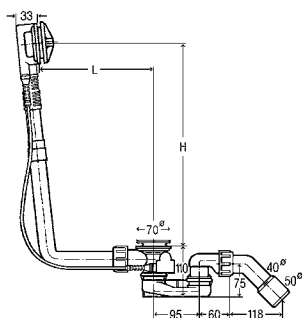
■ chrome-plated rotatable rosette, chrome-plated drain plug, odour trap, drain elbow 45°, chrome-plated valve

Model 6162.45

| DN | BWL | L | H | BS | B52 | PU | Article | £ |
|-------|-----|---------|---------|----|-----|----|---------|--------|
| 40/50 | 560 | 100-260 | 180-400 | ✓ | ✓ | 24 | 101 909 | 121.76 |

BWL = bowden wire length; SB = standard bathtub; B52 = for bathtub with Ø 52 drain hole

MULTIPLEX FUNCTIONAL UNIT



Multiplex Drain/overflow functional unit

flat version; only 33 mm space required behind the bathtub

- without: rotatable rosette, drain plug
- odour trap, drain elbow 45°, chrome-plated valve

| Model | DN | BWL | L | H | SB | BCC | XLB | B52 | PU | Article | £ |
|--------|-------|------|---------|---------|----|-----|-----|-----|----|---------|--------|
| 6162.1 | 40/50 | 560 | 100–260 | 180–400 | ✓ | | | ✓ | 24 | 103 071 | 90.96 |
| 6163.1 | 40/50 | 725 | 130–370 | 180–430 | | ✓ | | ✓ | 5 | 111 069 | 102.41 |
| 6163.2 | 40/50 | 1070 | 130–680 | 180–480 | | | ✓ | ✓ | 10 | 308 889 | 118.93 |

BWL = bowden wire length; SB = standard bathtub; BCC = bathtub central connection; XLB = xtra-long bathtub; B52 = for bathtub with Ø 52 drain hole

EQUIPMENT SETS FOR MULTIPLEX DRAIN/OVERFLOW



Multiplex Equipment set Visign M5

- for drain/overflow functional unit
- rotatable rosette, drain plug

Model 6162.01

| Version plastic | PU | Article | £ |
|----------------------------------|----|----------------------|--------|
| chrome-plated | 10 | 721 244 | 30.94 |
| chrome matt | 1 | 735 906 | 96.12 |
| stainless steel coloured brushed | 1 | 735 890 | 132.29 |
| design white | 1 | 735 883 | 65.90 |
| black matt | 1 | 806 118 | 149.38 |
| special colour | 1 | 765 873 ¹ | ON REQ |
| metallic colour | 1 | 765 880 ¹ | ON REQ |

¹⁾ Delivery time for customised range: 10 weeks plus shipping; non-returnable!



Multiplex Equipment set Visign M3

- for drain/overflow functional unit
- rotatable rosette, drain plug

Model 6154.0

| Version plastic | PU | Article | £ |
|-----------------|----|----------------------|--------|
| chrome-plated | 1 | 576 325 | 82.26 |
| design white | 1 | 735 913 | 136.04 |
| special colour | 1 | 765 910 ¹ | ON REQ |
| metallic colour | 1 | 765 927 ¹ | ON REQ |

¹⁾ Delivery time for customised range: 10 weeks plus shipping; non-returnable!



Multiplex equipment set

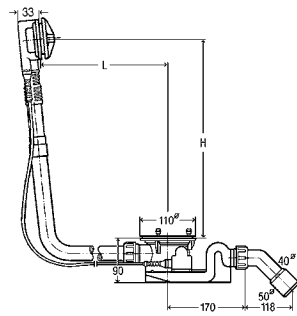
Visign M9

water level increase plus 5 cm

- for drain/overflow functional unit
- overflow rosette, rotatable rosette, fixing flange, drain plug

Model 6171.0

| Version plastic | PU | Article | £ |
|-----------------|----|---------|--------|
| chrome-plated | 1 | 724 597 | 149.30 |

ROTAPLEX FUNCTIONAL UNIT

Rotaplex Drain/overflow functional unit
flat version; only 33 mm space required behind the bathtub
 ■ without: rotatable rosette, cover plate
 ■ odour trap, drain elbow 45°
Model 6142.32

| DN | BWL | L | H | BCC | B90 | PU | Article | £ |
|-------|-----|---------|---------|-----|-----|----|---------|--------|
| 40/50 | 725 | 150-400 | 180-430 | ✓ | ✓ | 10 | 488 659 | 288.07 |

BWL = bowden wire length; BCC = bathtub central connection; B90 = for bathtub with Ø 90 drain hole

EQUIPMENT SETS FOR ROTAPLEX DRAIN/OVERFLOW

Rotaplex Equipment set Visign R5
 ■ for drain/overflow functional unit
 ■ rotatable rosette, cover plate
Model 6142.01

| Version plastic | PU | Article | £ |
|-----------------|----|----------------------|--------|
| chrome-plated | 1 | 721 558 | 53.06 |
| special colour | 1 | 773 397 ¹ | ON REQ |
| metallic colour | 1 | 773 403 ¹ | ON REQ |

¹⁾ Delivery time for customised range: 10 weeks plus shipping; non-returnable!

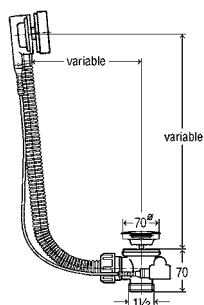


Rotaplex equipment set Visign R3
 ■ for drain/overflow functional unit
 ■ rotatable rosette, cover plate
Model 6156.0

| Version plastic | PU | Article | £ |
|-----------------|----|----------------------|--------|
| chrome-plated | 1 | 586 508 | 124.18 |
| special colour | 1 | 773 427 ¹ | ON REQ |
| metallic colour | 1 | 773 434 ¹ | ON REQ |

¹⁾ Delivery time for customised range: 10 weeks plus shipping; non-returnable!

SIMPLEX

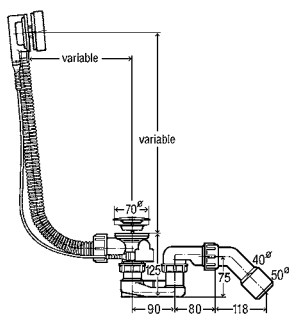


Simplex Drain/overflow flat version; only 33 mm space required behind the bathtub

- without: odour trap
- flexible overflow pipe, chrome-plated rotatable rosette, chrome-plated drain plug, stainless steel valve

| Model | G | BWL | SB | BCC | B52 | PU | Article | £ |
|---------|----|-----|----|-----|-----|----|---------|-------|
| 6168.2 | 1½ | 560 | ✓ | | ✓ | 25 | 133 825 | 71.59 |
| 6168.21 | 1½ | 725 | | ✓ | ✓ | 25 | 595 685 | 82.68 |

BWL = bowden wire length;; SB = standard bathtub; BCC = bathtub central connection; B52 = for bathtub with Ø 52 drain hole



Simplex Drain/overflow flat version; only 33 mm space required behind the bathtub

- flexible overflow pipe, chrome-plated rotatable rosette, chrome-plated drain plug, odour trap, drain elbow 45°, stainless steel valve

| Model | DN | BWL | SB | BCC | B52 | PU | Article | £ |
|---------|-------|-----|----|-----|-----|----|---------|-------|
| 6168.45 | 40/50 | 560 | ✓ | | ✓ | 25 | 285 357 | 80.60 |
| 6168.46 | 40/50 | 725 | | ✓ | ✓ | 25 | 595 678 | 92.00 |

BWL = bowden wire length;; SB = sStandard bathtub; BCC = bathtub central connection; B52 = for bathtub with Ø 52 drain hole

EQUIPMENT FOR SIMPLEX DRAIN/OVERFLOW



Drain plug

- for Multiplex, Multiplex Trio, Simplex

Model 6168-035

| Version | PU | Article | £ |
|---------------|----|---------|-------|
| chrome-plated | 50 | 215 392 | 12.44 |



Simplex rosette

- for series from 2009

Model 6168.02

| Version | PU | Article | £ |
|---------------|----|---------|-------|
| chrome-plated | 1 | 657 406 | 18.92 |



i ALL THE BENEFITS AT A GLANCE

- Easy selection of design: one functional unit for all equipment sets
- Award-winning design
- Extremely flat design of the equipment sets Visign MT3 and MT5
- Additional water level raiser function with the equipment set Visign MT9
- With MT3 and MT5, water jet angle can be adjusted to the inclination of the individual tub rim
- Matches almost every type of bathtub thanks to small installation depth

An overview of the overflow raiser model:

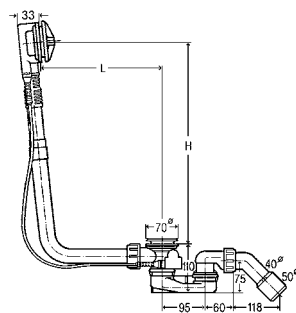
- Multiplex Visign M9 and Multiplex Trio Visign MT9 Chrom, sizes 560 mm, 725 mm and 1,070 mm
- Reconstruction set Multiplex Visign M9, for modifying the existing Multiplex to water level raiser function
- Reconstruction set Multiplex Trio Visign MT9, for modifying the existing Multiplex Trio to water level raiser function



Fig. 1: Without overflow raiser function, the water flows off directly at the bottom of the drain.

Fig. 2: With overflow raiser function, the water initially flows off at the top; the tub filling height is increased by 5 cm.

MULTIPLEX TRIO FUNCTIONAL UNIT



Multiplex Trio Drain/overflow functional unit

flat version; only 33 mm space required behind the bathtub

- for water inlet through the overflow unit
- without: rotatable rosette, overflow rosette, drain plug
- inlet flange, odour trap, drain elbow 45°, chrome-plated valve

| Model | DN | BWL | L | H | SB | BCC | XLB | B52 | PU | Article | £ |
|---------|-------|------|---------|---------|----|-----|-----|-----|----|---------|--------|
| 6161.52 | 40/50 | 560 | 100-260 | 180-400 | ✓ | | | ✓ | 10 | 725 778 | 171.62 |
| 6161.62 | 40/50 | 725 | 130-370 | 180-430 | | ✓ | | ✓ | 5 | 727 970 | 196.29 |
| 6161.72 | 40/50 | 1070 | 130-680 | 180-480 | | | ✓ | ✓ | 10 | 727 987 | 265.07 |

BWL = bowden wire length, SB = standard bathtub, BCC = bathtub central connection, XLB = extra-long bathtub, B52 = for bathtub with Ø 52 drain hole

EQUIPMENT SETS FOR MULTIPLEX TRIO DRAIN/OVERFLOW

**Multiplex Trio Equipment set Visign MT5**

- for drain/overflow functional unit
- suitable for Multiplex Trio drain/overflow functional unit model 6161.52, 6161.62, 6161.72
- rotatable rosette, overflow rosette, drain plug

Model 6161.01

| Version plastic | PU | Article | £ |
|----------------------------------|----|----------------------|--------|
| chrome-plated | 10 | 725 785 | 193.47 |
| black matt | 1 | 806 125 | 407.42 |
| chrome matt | 1 | 732 486 | 326.92 |
| polished brass | 1 | 732 493 | 470.32 |
| stainless steel coloured brushed | 1 | 732 509 | 395.60 |
| design white | 1 | 725 815 | 313.55 |
| special colour | 1 | 766 474 ¹ | ON REQ |
| metallic colour | 1 | 766 481 ¹ | ON REQ |

¹⁾ Delivery time for customised range: 10 weeks plus shipping; non-returnable!

**Multiplex Trio Equipment set Visign MT3**

- for drain/overflow functional unit
- suitable for Multiplex Trio drain/overflow functional unit model 6161.52, 6161.62, 6161.72
- rotatable rosette, overflow rosette, drain plug

Model 6161.13

| Version plastic | PU | Article | £ |
|-----------------|----|----------------------|--------|
| chrome-plated | 1 | 725 792 | 223.74 |
| design white | 1 | 725 822 | 344.87 |
| special colour | 1 | 766 504 ¹ | ON REQ |
| metallic colour | 1 | 766 511 ¹ | ON REQ |

¹⁾ Delivery time for customised range: 10 weeks plus shipping; non-returnable!

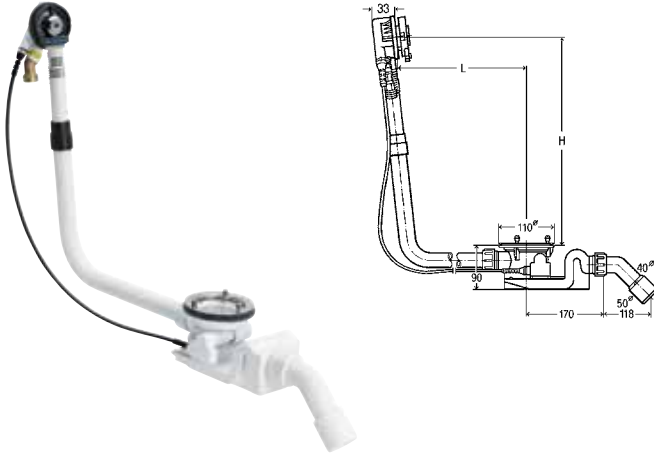
**Multiplex Trio Equipment set Visign MT9
water level increase plus 5 cm**

- for drain/overflow functional unit
- suitable for Multiplex Trio drain/overflow functional unit model 6161.52, 6161.62, 6161.72
- overflow rosette, rotatable rosette, fixing flange, drain plug

Model 6170.0

| Version plastic | PU | Article | £ |
|-----------------|----|---------|--------|
| chrome-plated | 1 | 724 580 | 308.93 |

ROTAPLEX TRIO FUNCTIONAL UNIT



Rotaplex Trio Drain/overflow functional unit

flat version; only 33 mm space required behind the bathtub

- for water inlet through the overflow unit
- without: rotatable rosette, cover plate, overflow rosette
- inlet flange, odour trap, drain elbow 45°

| Model | DN | BWL | L | H | BCC | XLB | B90 | PU | Article | £ |
|---------|-------|------|---------|---------|-----|-----|-----|----|---------|--------|
| 6141.62 | 40/50 | 725 | 150–400 | 180–430 | ✓ | | ✓ | 10 | 727 949 | 333.76 |
| 6141.72 | 40/50 | 1070 | 150–680 | 180–480 | | ✓ | ✓ | 1 | 727 956 | 374.65 |

BWL = bowden wire length; BCC = bathtub central connection; XLB = extra-long bathtub; B90 = for bathtub with Ø 90 drain hole

EQUIPMENT SETS FOR ROTAPLEX TRIO DRAIN/OVERFLOW



Rotaplex Trio Equipment set Visign RT5

- for drain/overflow functional unit
- rotatable rosette, overflow rosette, cover plate

Model 6141.01

| Version plastic | PU | Article | £ |
|----------------------------------|----|----------------------|--------|
| chrome-plated | 1 | 732 530 | 193.47 |
| stainless steel coloured brushed | 1 | 732 547 | 475.15 |
| design white | 1 | 732 523 | 320.89 |
| special colour | 1 | 773 113 ¹ | ON REQ |
| metallic colour | 1 | 773 120 ¹ | ON REQ |

¹⁾ Delivery time for customised range: 10 weeks plus shipping; non-returnable!



Rotaplex Trio Equipment set Visign RT3

- for drain/overflow functional unit
- rotatable rosette, overflow rosette, cover plate

Model 6141.02

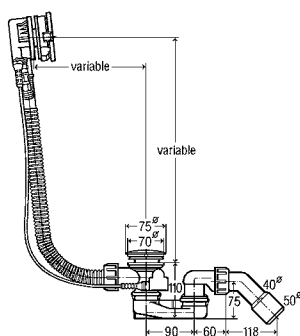
| Version plastic | PU | Article | £ |
|-----------------|----|----------------------|--------|
| chrome-plated | 1 | 734 107 | 193.47 |
| special colour | 1 | 773 144 ¹ | ON REQ |
| metallic colour | 1 | 775 056 ¹ | ON REQ |

¹⁾ Delivery time for customised range: 10 weeks plus shipping; non-returnable!



Less is more.
Trio with water inlet through the overflow unit.

SIMPLEX TRIO



Simplex Trio Drain/overflow

Visign MT5

- for water inlet through the overflow unit
- flexible overflow pipe, chrome-plated rotatable rosette, chrome-plated drain plug, odour trap, drain elbow 45°, stainless steel valve

| Model | DN | BWL | SB | BCC | B52 | PU | Article | £ |
|---------|-------|-----|----|-----|-----|----|---------|--------|
| 6166.41 | 40/50 | 560 | ✓ | | ✓ | 10 | 728 007 | 287.97 |
| 6166.42 | 40/50 | 725 | | ✓ | ✓ | 10 | 728 014 | 307.45 |

BWL = bowden wire length; SB = standard bathtub; BCC = bathtub central connection; B52 = for bathtub with Ø 52 drain hole

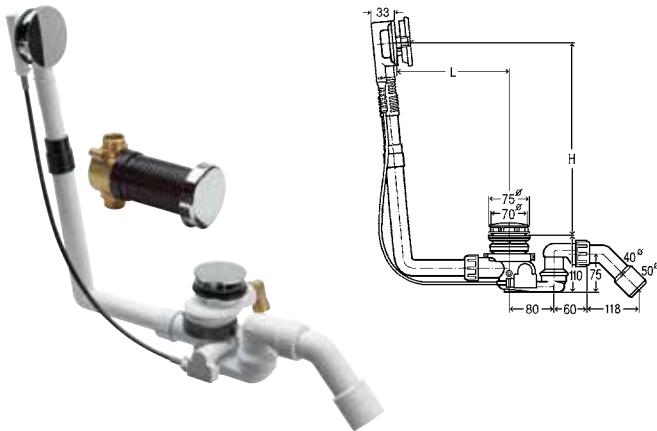
Viega Multiplex Trio F

NEAR-SILENT BATH FILLING FOR MAXIMUM COMFORT.

Multiplex Trio F is not only a real eye-catcher. It can also be hardly heard thanks to the innovative step of filling the bath from the bottom upwards. Inlet and drain are separate from each other and have backflow protection and a DVGW-certified pipe interrupter.



MULTIPLEX TRIO F



Multiplex Trio F Drain/overflow flat version; only 33 mm space required behind the bathtub

- for water inlet through the drain unit
- rotatable rosette Visign M5, chrome-plated cover plate, inlet element, odour trap, drain elbow 45°, concealed pipe interrupter DN20, DIN EN 1717 safety device DB, with rosette RU2

| Model | DN | BWL | L | H | SB | BCC | XLB | B52 | PU | Article | £ |
|--------|-------|------|---------|---------|----|-----|-----|-----|----|---------|--------|
| 6145.4 | 40/50 | 560 | 100–260 | 180–350 | ✓ | | | ✓ | 1 | 672 027 | 623.15 |
| 6145.5 | 40/50 | 725 | 130–370 | 180–370 | | ✓ | | ✓ | 1 | 675 462 | 631.58 |
| 6145.6 | 40/50 | 1070 | 130–680 | 180–430 | | | ✓ | ✓ | 1 | 675 479 | 692.55 |

BWL = bowden wire length; SB = standard bathtub; BCC = bathtub central connection; XLB = extra-long bathtub; B52 = for bathtub with Ø 52 drain hole



ALL THE BENEFITS AT A GLANCE

- Almost soundless tub filling system from floor level
- DVGW-certified concealed pipe interrupter included
- Small space requirement thanks to the flat rosette and narrow inlet
- Clear separation of inlet and drain
- Flat overflow housing of 33 mm, suitable for modern tubs with small rim
- Space-saving construction height of the odour trap (110 mm only)
- Different lengths for almost all bathtubs and design requirements
- Easy mounting thanks to the flexible overflow housing and optimised Bowden cable
- Movable odour trap with higher drain capacity

Viega Multiplex Trio E

FULLY AUTOMATIC FOR TOTAL RELAXATION.

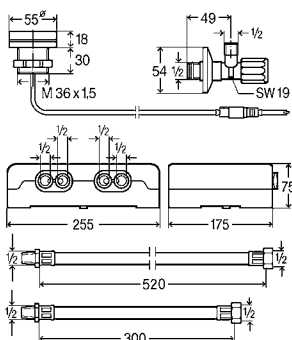
The Internet of Things enters into the bathroom with Viega Multiplex Trio E. The intelligent control element can be controlled via WLAN and Internet suggesting risk driving safety? Simply by smartphone, tablet, PC or notebook.



i

ALL THE BENEFITS AT A GLANCE

- Remote-controllable by smartphone, tablet, PC or notebook
- Large scope to implement design ideas – the visible part of the operating unit requires only small space
- Mounting on the bathtub rim or on the wall using the extension set
- Fully automatic control of water temperature, inlet volume, fill level – even from the road
- Memory function to save individual settings
- Automatic filling of the bathtub when calling-up the memory function
- Particularly safe thanks to the active overflow protection
- “Invisible” arrangement on mixing technology

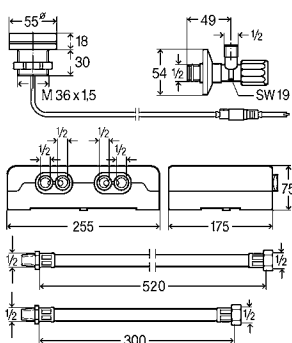


Multiplex Trio E Bath mixing unit electronic

- for filling of a bathtub (electronically controlled), in combination with Multiplex Trio, Multiplex Trio F or Rotaplex Trio (optional electric driven)
- in addition optional available Multiplex Trio E WLAN module model 6146.224
- electrical opening/closing function of Viega drain set, remote-controlled operation via mobile devices (Android, iOS, Windows) in direct operation or Internet with Multiplex Trio E-WLAN module

Model 6146

| | PU | Article | £ |
|--|----|---------|----------|
| | 1 | 662 295 | 2,430.52 |

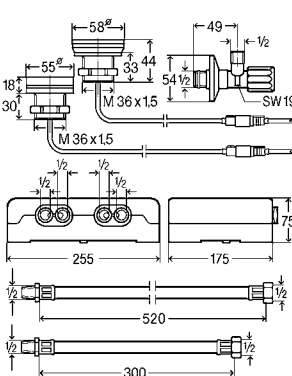


Multiplex Trio E2 Bath mixing unit electronic

- for filling of a bathtub (electronically controlled), in combination with Multiplex Trio, Multiplex Trio F or Rotaplex Trio (optional electric driven)
- in addition optional available Multiplex Trio E WLAN module model 6146.224
- electrical opening/closing function of Viega drain set, remote-controlled operation via mobile devices (Android, iOS, Windows) in direct operation or Internet with Multiplex Trio E-WLAN module

Model 6146.2

| | PU | Article | £ |
|--|----|---------|----------|
| | 1 | 682 972 | 2,903.48 |



Multiplex Trio E3 Bath mixing unit electronic

- for filling of a bathtub (electronically controlled), in combination with Multiplex Trio, Multiplex Trio F or Rotaplex Trio (optional electric driven)
- in addition optional available Multiplex Trio E WLAN module model 6146.224

Model 6146.215

| | PU | Article | £ |
|--|----|---------|----------|
| | 1 | 684 655 | 3,179.46 |



Multiplex Trio E WLAN module

- for remote-controlled operation of Multiplex Trio E via mobile devices (Android, iOS, Windows) in direct operation or Internet
- suitable for Multiplex Trio E bath mixing unit model 6146, Multiplex Trio E2 bath mixing unit model 6146.2, Multiplex Trio E3 bath mixing unit model 6146.215
- no app needed, as operation occurs by Browser (Safari, Internet Explorer, Chrome, Firefox) of mobile devices

Note

WLAN repeater operation possible.

Model 6146.224

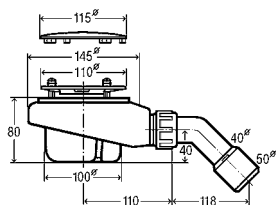
| | PU | Article | £ |
|--|----|---------|--------|
| | 1 | 708 870 | 536.79 |

**ALL THE BENEFITS AT A GLANCE**

- Premium quality
- Sophisticated design
- Removable odour trap with cover plate
- The drains are also perfect for flat shower trays

**Viega drains for shower trays****MEETING HIGHEST DEMANDS ON DESIGN AND DRAINAGE CAPACITY.**

The trend towards rain sky, flood and XXL showerheads continues. No problem for shower tray sets with a drainage capacity of up to 100% above standard. The high-quality manufactured design cover plates, being robust and having received multiple awards, make recent bathroom design child's play.

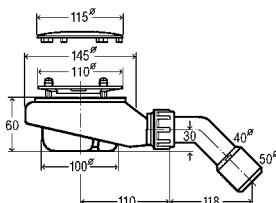
TEMPOPLEX DRAINS WITH COVER PLATE**Tempoplex Drain**

■ chrome-plated cover plate, removable odour trap, drain elbow 45°

Model 6961

| Ø | H | DN | D90 | PU | Article | £ |
|-----|----|-------|-----|------|---------|-------|
| 115 | 80 | 40/50 | ✓ | 1/10 | 575 601 | 79.45 |

D90 = for shower trays with Ø 90 drain hole

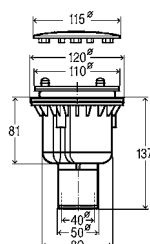
**Tempoplex drain CH 60 mm**

■ chrome-plated cover plate, removable odour trap, drain elbow 45°

Model 6963

| Ø | H | DN | D90 | PU | Article | £ |
|-----|----|-------|-----|------|---------|-------|
| 115 | 60 | 40/50 | ✓ | 1/10 | 634 100 | 71.52 |

D90 = for shower trays with Ø 90 drain hole

**Tempoplex Drain**

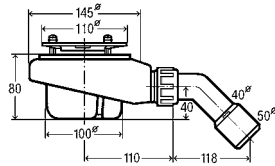
■ chrome-plated cover plate, removable odour trap, vertical drain pipe, minimum drill hole Ø 120 mm

Model 6965

| Ø | H | DN | D90 | PU | Article | £ |
|-----|----|-------|-----|----|---------|-------|
| 115 | 81 | 40/50 | ✓ | 1 | 801 786 | 91.93 |

D90 = for shower trays with Ø 90 drain hole

TEMPOPLEX FUNCTIONAL UNITS



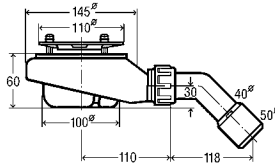
Tempoplex Drain functional unit

- without: cover plate
- removable odour trap, drain elbow 45°

Model 6961.1

| DN | H | D90 | PU | Article | £ |
|-------|----|-----|------|----------------|--------------|
| 40/50 | 80 | ✓ | 1/10 | 575 625 | 46.86 |

D90 = for shower trays with Ø 90 drain hole



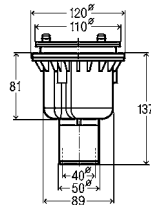
Tempoplex Drain functional unit, CH 60 mm

- without: cover plate
- removable odour trap, drain elbow 45°

Model 6963.1

| DN | H | D90 | PU | Article | £ |
|-------|----|-----|------|----------------|--------------|
| 40/50 | 60 | ✓ | 1/10 | 634 117 | 40.60 |

D90 = for shower trays with Ø 90 drain hole



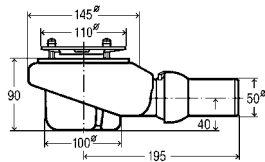
Tempoplex Drain functional unit

- without: cover plate
- removable odour trap, vertical drain pipe, minimum drill hole Ø 120 mm

Model 6965.1

| Ø | H | DN | D90 | PU | Article | £ |
|-----|----|-------|-----|----|----------------|--------------|
| 115 | 81 | 40/50 | ✓ | 1 | 801 793 | 54.27 |

D90 = for shower trays with Ø 90 drain hole



Tempoplex Plus Drain functional unit

high drainage capacity

- without: cover plate
- removable odour trap, height-adjustable horizontal drain pipe with ball joint

Model 6960.1

| DN | H | D90 | PU | Article | £ |
|----|----|-----|----|----------------|--------------|
| 50 | 90 | ✓ | 10 | 559 991 | 60.77 |

D90 = for shower trays with Ø 90 drain hole



Cover plate

for functional unit, Tempoplex, Tempoplex Plus, Tempoplex 60 mm

Model 6960.0

| Ø | D90 | Version plastic | PU | Article | £ |
|-----|-----|----------------------------------|----|----------------------------|---------------|
| 112 | ✓ | chrome-plated | 1 | 560 003¹ | 116.77 |
| 112 | ✓ | chrome matt | 1 | 560 812 | 90.95 |
| 112 | ✓ | polished brass | 1 | 560 829* | 451.13 |
| 112 | ✓ | stainless steel coloured brushed | 1 | 560 843 | 93.14 |
| 112 | ✓ | design white | 1 | 560 805 | 64.05 |

D90 = for shower trays with Ø 90 drain hole

¹⁾ brass cover plate

* = Discontinued, limited availability



Drain pipe

- for connection to the waste water system, plug-in connection to UK pipe connection (Inch)
- adhesive

Model 4981.87

| DN | internal-Ø | PU | Article | £ |
|-------|------------|----|----------------|--------------|
| 40/50 | 43 | 1 | 794 897 | 24.36 |

Viega drains for washbasins

DESIGN AND TECHNOLOGY KNOWING ALL THE INS AND OUTS.

Whether the shapely Eleganta series, or the well-conceived bottle basin traps – their attractive design makes them true eye-catchers. But true to the well-known Viega style, classical functional fittings are characterised not only by their appealing contours but also by excellent technical properties.

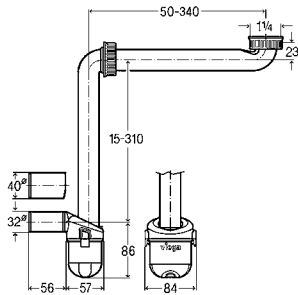


i

ALL THE BENEFITS AT A GLANCE

- High-quality draining technology with simple assembly
- Visign universal and slotted valves with open cover or click-close cover
- Different design siphons
- Bottle or pipe basin trap made of brass or plastic

ODOUR TRAPS

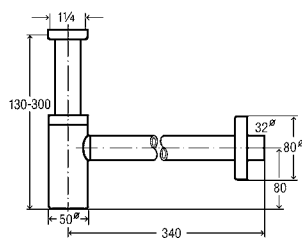


Odour trap

- for wall mounting e.g. in bathroom furnitures
- successor to odour trap model 5634.1, 7851.0
- plastic
- space-making, height-adjustable, tool-less cleaning

Model 5634.15

| G | DN | PU | Article | £ |
|-------|-------|----|---------|-------|
| 1 1/4 | 32/40 | 1 | 804 688 | 44.95 |

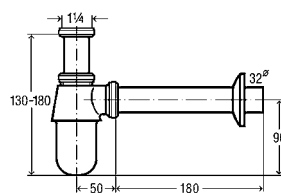


Eleganta bottle odour trap

- chrome-plated brass
- adjusting pipe 200 mm, drain pipe 310 mm, rosette Ø32xØ80xH15 mm

Model 5788

| G | DN | PU | Article | £ |
|-------|----|----|---------|--------|
| 1 1/4 | 32 | 1 | 440 190 | 224.66 |

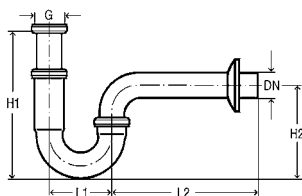


Bottle odour trap

- brass
- cup Ø 50 mm, adjusting pipe 75 mm, drain pipe 200 mm

Model 5753

| G | DN | Version | PU | Article | £ |
|-------|----|---------------|----|---------|-------|
| 1 1/4 | 32 | chrome-plated | 25 | 100 674 | 32.05 |



Pipe odour trap

- chrome-plated brass

Model 5611

| G | DN | d | L1 | L2 | H1 | H2 | PU | Article | £ |
|-------|----|----|----|-----|---------|-----|----|---------|--------|
| 1 1/4 | 32 | | 75 | 170 | 140-190 | 110 | 50 | 305 611 | 21.37 |
| 1 1/4 | | 38 | 85 | 200 | 160-220 | 125 | 1 | 123 451 | 107.19 |
| 1 1/4 | | 38 | 85 | 200 | 140-200 | 125 | 1 | 122 515 | 107.19 |

UNIVERSAL VALVES



Universal valve Visign V1

- chrome-plated brass
- lockable

Model 5439

| G | Ø | PU | Article | £ |
|-------|----|----|---------|--------|
| 1 1/4 | 63 | 1 | 492 687 | 105.76 |



Universal valve Visign V2

- chrome-plated brass
- lockable

Model 5441

| G | Ø | PU | Article | £ |
|-------|----|----|---------|--------|
| 1 1/4 | 63 | 1 | 492 809 | 176.05 |

General terms of delivery.

1 Interpretation

1.1 Definitions. In these Conditions, the following definitions apply:

“Business Day” means a day (other than a Saturday, Sunday or public holiday) when banks are open for business;

“Conditions” means the terms and conditions set out in this document as amended from time to time in accordance with clause 11.6;

“Contract” means the contract between Viega and the Customer for the sale and purchase of the Products in accordance with these Conditions;

“Customer” means the person or firm who purchases the Products from Viega;

“Delivery” has the meaning given to it in clause 4.3;

“Delivery Date” means the date on which Delivery takes place;

“Delivery Location” has the meaning given to it in clause 4.2;

“Force Majeure Event” means to the extent that they are beyond a party’s reasonable control, any strikes, lock-outs or other industrial disputes of third parties, act of God, riot, war, civil commotion, malicious damage, fire, explosion, terrorist act, compliance with any law or governmental order, rule, regulation or direction but excludes any weather related event;

“Order” means the Customer’s order for the Products, as set out in the Customer’s purchase order form, the Customer’s written acceptance of Viega’s quotation, or overleaf, as the case may be;

“Products” means the goods (or any part of them) set out in the Order;

“Specification” means any specification for the Products, including any related plans and drawings, that is agreed in writing by the Customer and Viega;

“VAT” has the meaning given to it in clause 7.5;

“Viega” means Viega Limited, a company registered in England and Wales with company number 09096150 whose registered office is at Palmerston House, 814 Brighton Road, Purley, Surrey, United Kingdom CR8 2BR; and

“Warranty” has the meaning given to it in clause 5.1.

1.2 Construction. In these Conditions, the following rules apply:

1.2.1 A reference to a statute or statutory provision is a reference to such statute or provision as amended or re-enacted. A reference to a statute or statutory provision includes any subordinate legislation made under that statute or statutory provision, as amended or re-enacted.

1.2.2 Any phrase introduced by the terms **including**, **include**, **in particular** or any similar expression shall be construed as illustrative and shall not limit the sense of the words preceding those terms.

1.2.3 Unless the context otherwise requires, words in the singular shall include the plural and in the plural shall include the singular.

1.2.4 A reference to **writing** or **written** includes faxes and e-mails.

2 Basis of contract

2.1 These Conditions apply to the Contract to the exclusion of any other terms that the Customer seeks to impose or incorporate, or which are implied by trade, custom, practice or course of dealing.

2.2 The Order constitutes an offer by the Customer to purchase the Products in accordance with these Conditions. The Customer is responsible for ensuring that the terms of the Order and any applicable Specification are complete and accurate.

2.3 The Order shall only be deemed to be accepted when Viega issues a written acceptance of the Order, at which point the Contract shall come into existence.

2.4 The Contract constitutes the entire agreement between the parties. The Customer acknowledges that it has not relied on any statement, promise, representation, assurance or warranty made or given by or on behalf of Viega which is not set out in the Contract.

2.5 Any samples, drawings, descriptive matter, or advertising produced by Viega and any descriptions or illustrations contained in Viega’s catalogues or brochures are produced for the sole purpose of giving an approximate idea of the Products described in them. They shall not form part of the Contract or have any contractual force.

2.6 A quotation for the Products given by Viega shall not constitute an offer. A quotation shall only be valid for a period of twenty (20) Business Days from its date of issue.

3 Products

3.1 The Products are described in Viega’s catalogue as modified by any applicable Specification.

3.2 To the extent that the Products are to be manufactured in accordance with a Specification supplied by the Customer, the Customer shall indemnify Viega against all liabilities, costs, expenses, damages and losses (including any direct, indirect or consequential losses, loss of profit, loss of reputation and all interest, penalties and legal and other professional costs and expenses) suffered or incurred by Viega in connection with any claim made against Viega for actual or alleged infringement of a third party’s intellectual property rights arising out of or in connection with Viega’s use of the Specification. This clause 3.2 shall survive termination of the Contract.

3.3 Viega reserves the right to amend the Specification of any Product(s) if required by any applicable statutory or regulatory requirements.

4 Delivery

4.1 Viega shall ensure that:

4.1.1 each delivery of the Products is accompanied by a delivery note which shows the date of the Order, all relevant Customer and Viega reference numbers, the type and quantity of the Products (including the code number of the Products, where applicable), special storage instructions (if any) and, if the Order is being delivered by instalments, the outstanding balance of Products remaining to be delivered; and

4.1.2 if Viega requires the Customer to return any packaging materials to Viega, that fact is clearly stated on the delivery note. The Customer shall make any such packaging materials available for collection at such times as Viega shall reasonably request. Returns of packaging materials shall be at Viega’s expense.

4.2 Viega shall deliver the Products to the location set out in the Order or such other location as the parties may agree (**“Delivery Location”**) at any time after Viega notifies the Customer that the Products are ready.

4.3 Delivery of the Products shall be completed on the Products’ arrival at the Delivery Location (**“Delivery”**).

4.4 Any dates quoted for Delivery are approximate only, and the time of Delivery is not of the essence. Viega shall not be liable for any delay in Delivery that is caused by a Force Majeure Event or the Customer’s failure to provide Viega with adequate Delivery instructions or any other instructions that are relevant to the supply of the Products.

- 4.5 If Viega fails to deliver the Products, its liability shall be limited to the costs and expenses incurred by the Customer in obtaining replacement Products of similar description and quality in the cheapest market available, less the price of the Products.
- 4.6 If the Customer fails to accept Delivery of the Products within three (3) Business Days of Viega notifying the Customer that the Products are ready, then, except where such failure or delay is caused by a Force Majeure Event or Viega's failure to comply with its obligations under the Contract:
- 4.6.1 Delivery shall be deemed to have been completed at 9.00 am on the third Business Day after the day on which Viega notified the Customer that the Products were ready; and
- 4.6.2 Viega shall store the Products until Delivery takes place, and charge the Customer for all related costs and expenses (including insurance).
- 4.7 If ten (10) Business Days after the day on which Viega notified the Customer that the Products were ready for Delivery the Customer has not accepted Delivery, Viega may resell or otherwise dispose of part or all of the Products and, after deducting reasonable storage and selling costs, account to the Customer for any excess over the price of the Products or charge the Customer for any shortfall below the price of the Products.
- 4.8 The Customer shall not be entitled to reject the Products if Viega delivers up to and including 5% more or less than the quantity of Products ordered, but a pro rata adjustment shall be made to the Order invoice on receipt of written notice from the Customer that the wrong quantity of Products was delivered.
- 4.9 Viega may deliver the Products by instalments, which shall be invoiced and paid for separately. Each instalment shall constitute a separate Contract. Any delay in Delivery or defect in an instalment shall not entitle the Customer to cancel any other instalment.
- 5 Quality**
- 5.1 Viega warrants that upon Delivery, and for a period of 25 years after the date which is stipulated in the separate warranty documentation accompanying the Products, the Products shall:
- 5.1.1 conform in all material respects with the description and any applicable Specification; and
- 5.1.2 be free from material defects in design, material and workmanship;
(the "**Warranty**").
- 5.2 Subject to clause 5.3, if:
- 5.2.1 the Customer gives notice in writing to Viega within a reasonable time of discovery that some or all of the Products do not comply with the Warranty;
- 5.2.2 Viega is given a reasonable opportunity of examining such Products; and
- 5.2.3 the Customer (if asked to do so by Viega) returns such Products to Viega's place of business at Viega's reasonable cost;
- Viega shall, at its option, repair or replace the defective Products, or refund the price of the defective Products in full. In addition, provided that the Customer notifies Viega of the defective Products within 6 years of the date stipulated in the separate warranty documentation accompanying the Products, Viega shall also be responsible for reasonable labour costs necessary for the installation of any repaired or replaced product notified to Viega in advance.
- 5.3 Viega shall not be liable for Products' failure to comply with the Warranty in any of the following events:
- 5.3.1 the Customer makes any further use of such Products after giving notice in accordance with clause 5.2;
- 5.3.2 the defect arises because the Customer failed to follow Viega's oral or written instructions as to the storage, commissioning, installation, use and maintenance of the Products or good trade and engineering practice regarding the same;
- 5.3.3 the Customer, or any intermediary that has directly or indirectly supplied the Products to the Customer, alters or repairs the Products without the written consent of Viega;
- 5.3.4 the defect arises as a result of fair wear and tear, wilful damage, negligence, or abnormal storage or working conditions;
- 5.3.5 the Products differ from their description and/or Specification as a result of changes made to ensure they comply with applicable statutory or regulatory requirements; or
- 5.3.6 the Products have been used or installed outside of the United Kingdom.
- 5.4 The Warranty sets out Viega's only liability to the Customer (whether in contract, tort (including negligence), breach of statutory duty, or otherwise) in respect of defective or faulty Products.
- 5.5 The Warranty is for the benefit of the Customer only and it may not be assigned, transferred or dealt with by any other person.
- 5.6 The Customer shall pass sufficient copies of any warranty documentation that accompanies the Products to its customers so that all members of the supply chain, including the end-user, have a copy of such documentation.
- 5.7 The terms implied by sections 13 to 15 of the Sale of Products Act 1979 are, to the fullest extent permitted by law, excluded from the Contract.
- 5.8 These Conditions shall apply to any repaired or replacement Products supplied by Viega.
- 5.9 If the Customer returns the Products to Viega for examination and it turns out that no warranty claims exists, Viega is entitled to charge the Customer a processing fee in the amount of 25% of the price of the respective Products but not less than 30 GBP before tax.
- 6 Title and risk**
- 6.1 The risk in the Products shall pass to the Customer on Delivery.
- 6.2 Title to the Products shall not pass to the Customer until (the earlier of):
- 6.2.1 Viega receives payment in full (in cash or cleared funds) for the Products and any other Products that Viega has supplied to the Customer in respect of which payment has become due, in which case title to the Products shall pass at the time of cleared payment of all such sums; and
- 6.2.2 the Customer resells the Products, in which case title to the Products shall pass to the Customer at the time specified in clause 6.4.
- 6.3 Until title to the Products has passed to the Customer, the Customer shall:
- 6.3.1 store the Products separately from all other Products held by the Customer so that they remain readily identifiable as Viega's property;
- 6.3.2 not remove, deface or obscure any identifying mark or packaging on or relating to the Products;
- 6.3.3 maintain the Products in satisfactory condition and keep them insured against all risks for their full price following Delivery;
- 6.3.4 notify Viega immediately if it becomes subject to any of the events listed in clauses 8.2.2 or 8.2.3; and
- 6.3.5 give Viega such information relating to the Products as Viega may require from time to time.

6.4 Subject to clause 6.5, the Customer may resell or use the Products in the ordinary course of its business (but not otherwise) before Viega receives payment for the Products. However, if the Customer resells the Products before that time:

6.4.1 it does so as principal and not as Viega's agent; and

6.4.2 title to the Products shall pass from Viega to the Customer immediately before the time at which resale by the Customer occurs.

6.5 If before title to the Products passes to the Customer, the Customer becomes subject to any of the events listed in clauses 8.2.2 and 8.2.3, then, without limiting any other right or remedy Viega may have:

6.5.1 the Customer's right to resell the Products or use them in the ordinary course of its business ceases immediately; and

6.5.2 Viega may at any time:

(i) require the Customer to deliver up all Products in its possession which have not been resold, or irrevocably incorporated into another Products; and

(ii) if the Customer fails to do so promptly, enter any premises of the Customer or of any third party where the Products are stored in order to recover them.

7 Price and payment

7.1 The price of the Products shall be the price set out in the Order, or, if no price is quoted, the price set out in Viega's published price list in force as at Delivery.

7.2 Viega may, by giving notice to the Customer at any time up to ten (10) Business Days before Delivery, increase the price of the Products to reflect any increase in the cost of the Products that is due to:

7.2.1 any factor beyond Viega's control (including foreign exchange fluctuations, increases in taxes and duties, and increases in labour, materials and other manufacturing costs);

7.2.2 any request by the Customer to change the date(s) of Delivery, quantities or types of Products ordered, or the Specification; or

7.2.3 any delay caused by any instructions of the Customer or failure of the Customer to give Viega adequate or accurate information or instructions.

7.3 The price of the Products is exclusive of the costs and charges of packaging, insurance and transport of the Products, which shall be invoiced to the Customer.

7.4 The price of the Products is exclusive of amounts in respect of value added tax ("VAT"). The Customer shall, on receipt of a valid VAT invoice from Viega, pay to Viega such additional amounts in respect of VAT as are chargeable on the supply of the Products.

7.5 Viega may invoice the Customer for the Products on or at any time after the completion of delivery.

7.6 The Customer shall pay the invoice in full and in cleared funds within twenty (20) Business Days of the date of the invoice. Payment shall be made to the bank account nominated in writing by Viega. Time of payment is of the essence.

7.7 If the Customer fails to make any payment due to Viega under the Contract by the due date for payment, then the Customer shall pay interest on the overdue amount at the rate of 8% per annum above Bank of England's base rate from time to time. Such interest shall accrue on a daily basis from the due date until actual payment of the overdue amount, whether before or after judgment. The Customer shall pay the interest together with the overdue amount.

7.8 The Customer shall pay all amounts due under the Contract in full without any set-off, counterclaim, deduction or withholding (except for any deduction or withholding required by law). Viega may at any time, without limiting any other rights or remedies it may have, set off any amount owing to it by the Customer against any amount payable by Viega to the Customer.

8 Termination and suspension

8.1 Viega may terminate the Contract by giving the Customer thirty (30) days' written notice.

8.2 Without limiting its other rights or remedies, Viega may terminate the Contract with immediate effect by giving written notice to the Customer if:

8.2.1 the Customer commits a material breach of any term of the Contract and (if such a breach is remediable) fails to remedy that breach within fourteen (14) days of the Customer being notified in writing to do so; or

8.2.2 an order is made or a resolution is passed for the winding-up of the Customer or an administrator is appointed by order of the Court or by other means to manage the affairs, business and property of the Customer or a receiver and/or manager or administrative receiver is validly appointed in respect of all or any of the Customer's assets or undertaking or circumstances arise which entitle the Court or a creditor to appoint a receiver and/or manager or administrative receiver or which entitle the Court to make a winding-up or bankruptcy order or the Customer takes or suffers any similar or analogous action (in any jurisdiction) in consequence of debt; or

8.2.3 the Customer ceases, or threatens to cease, to carry on business; or

8.2.4 there is a change of control of the Customer (within the meaning of section 1124 of the Corporation Tax Act 2010).

8.3 Termination of the Contract, howsoever arising, shall not affect any of the parties' rights and remedies that have accrued as at termination.

8.4 Clauses which expressly or by implication survive termination of the Contract shall continue in full force and effect.

9 Limitation of liability

9.1 Nothing in these Conditions shall limit or exclude either party's liability for:

9.1.1 death or personal injury caused by its negligence;

9.1.2 fraud or fraudulent misrepresentation; or

9.1.3 the deliberate default or wilful misconduct of that party, its employees, agents or subcontractors.

9.2 Subject to clause 9.1:

9.2.1 Viega shall under no circumstances whatsoever be liable to the Customer, whether in contract, tort (including negligence), breach of statutory duty, or otherwise, for any loss of profit, or any indirect or consequential loss arising under or in connection with the Contract;

9.2.2 Viega's total liability to the Customer in respect of all other losses arising under or in connection with the Contract, whether in contract, tort (including negligence), breach of statutory duty, or otherwise, shall in no circumstances exceed 100% of the sums paid or payable by the Customer under the relevant Contract at the time that the liability arose.

10 Force majeure

10.1 Neither party shall be liable for any failure or delay in performing its obligations under the Contract to the extent that such failure or delay is caused by a Force Majeure Event.

10.2 The Customer shall use all reasonable endeavours to mitigate the effect of a Force Majeure Event on the performance of its obligations under the Contract.

10.3 If a Force Majeure Event prevents, hinders or delays the Customer's performance of its obligations under the Contract for a continuous period of more than twenty (20) Business Days, Viega may terminate the Contract immediately by giving written notice to the Customer.

11 General

11.1 Assignment and other dealings.

11.1.1 Viega may at any time assign, transfer, mortgage, charge, subcontract or deal in any other manner with all or any of its rights or obligations under the Contract.

11.1.2 The Customer may not assign, transfer, mortgage, charge, subcontract, declare a trust over or deal in any other manner with any or all of its rights or obligations under the Contract without the prior written consent of Viega.

11.2 Notices.

11.2.1 Any notice or other communication given to a party under or in connection with the Contract shall be in writing, addressed to that party at its registered office (if it is a company) or its principal place of business (in any other case) or such other address as that party may have specified to the other party in writing in accordance with this clause, and shall be delivered personally, sent by pre-paid first class post or other next working day delivery service, commercial courier, fax or e-mail.

11.2.2 A notice or other communication shall be deemed to have been received:

- (i) if delivered personally, when left at the address referred to in clause 11.2.1;
- (ii) if sent by pre-paid first class post or other next working day delivery service, at 9.00 am on the second Business Day after posting;
- (iii) if delivered by commercial courier, on the date and at the time that the courier's delivery receipt is signed; or,
- (iv) if sent by fax or e-mail, one Business Day after successful transmission (where no failed transmission report or out of office message is received by the sender within one hour of sending).

11.2.3 The provisions of this clause shall not apply to the service of any proceedings or other documents in any legal action.

11.3 Severance.

11.3.1 If any provision or part-provision of the Contract is or becomes invalid, illegal or unenforceable, it shall be deemed modified to the minimum extent necessary to make it valid, legal and enforceable. If such modification is not possible, the relevant provision or part-provision shall be deemed deleted. Any modification to or deletion of a provision or part-provision under this clause shall not affect the validity and enforceability of the rest of the Contract.

11.3.2 If any provision or part-provision of this Contract is invalid, illegal or unenforceable, the parties shall negotiate in good faith to amend such provision so that, as amended, it is legal, valid and enforceable, and, to the greatest extent possible, achieves the intended commercial result of the original provision.

11.4 **Waiver.** A waiver of any right or remedy under the Contract or law is only effective if given in writing and shall not be deemed a waiver of any subsequent breach or default. No failure or delay by a party to exercise any right or remedy provided under the Contract or by law shall constitute a waiver of that or any other right or remedy, nor shall it prevent or restrict the further exercise of that or any other right or remedy. No single or partial exercise of such right or remedy shall prevent or restrict the further exercise of that or any other right or remedy.

11.5 **Third party rights.** A person who is not a party to the Contract shall not have any rights to enforce its terms.

11.6 **Variation.** Except as set out in these Conditions, no variation of the Contract, including the introduction of any additional terms and conditions, shall be effective unless it is in writing and signed by Viega.

11.7 **Governing law.** The Contract, and any dispute or claim arising out of or in connection with it or its subject matter or formation (including non-contractual disputes or claims), shall be governed by, and construed in accordance with the law of England and Wales.

11.8 **Jurisdiction.** Each party irrevocably agrees that the competent courts at the registered office of Viega shall have exclusive jurisdiction to settle any dispute or claim arising out of or in connection with this Contract or its subject matter or formation (including non-contractual disputes or claims).

UK 819 910-1/23 · We reserve the right to effect changes.



Viega Ltd.

2 Miller Court, Severn Drive
Tewkesbury Business Park
Tewkesbury, GL20 8DN
United Kingdom

Phone +44 (0) 204 582 6495

viega.co.uk

